

Investor Information

As of March 31, 2011

Shin-Etsu Chemical Co., Ltd.

Head Office: 6-1, Ohtemachi 2-chome,
Chiyoda-ku, Tokyo 100-0004, Japan

Date of Establishment:

September 16, 1926

Capital:

¥119,420 million

Number of Employees:

16,302 (including 72 consolidated subsidiaries)

Number of Shares Authorized:

1,720,000,000

Number of Shares Issued:

432,106,693

Number of Stockholders:

74,366

Fiscal Year-End:

March 31

Stockholders' Meeting:

June

Stock Listings:

Tokyo, Osaka, Nagoya (Ticker Code: 4063)

Transfer Agent:

Mitsubishi UFJ Trust and Banking Corporation

Auditor:

Ernst & Young ShinNihon

Please visit our website:

<http://www.shinetsu.co.jp>
(English, Japanese and Chinese)



Major Stockholders:

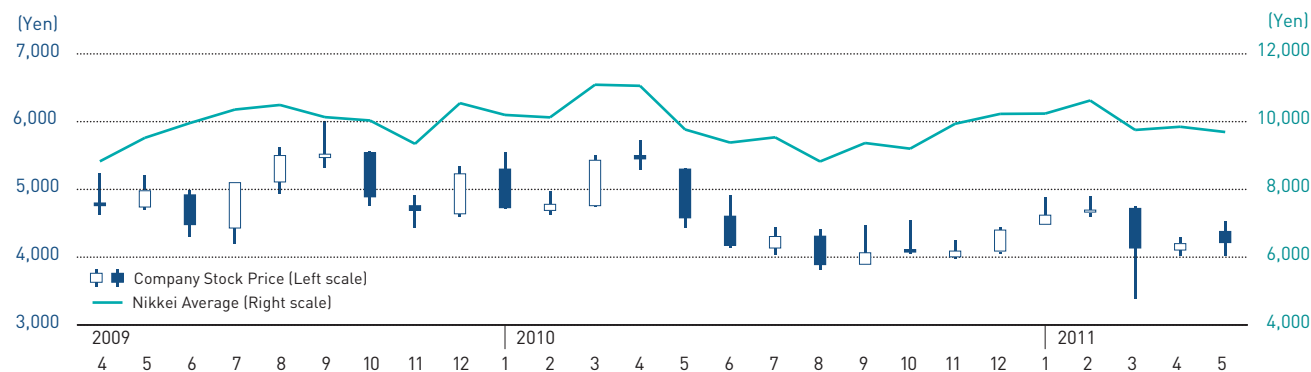
Name	Number of Shares (Thousands)	Percentage of Total Equity (%)
The Master Trust Bank of Japan, Ltd. (Trust account)	31,279	7.4
Japan Trustee Services Bank, Ltd. (Trust account)	29,560	7.0
Nippon Life Insurance Company	24,370	5.7
The Hachijuni Bank, Ltd.	11,790	2.8
Japan Trustee Services Bank, Ltd.(Trust account 4)	11,735	2.8
Meiji Yasuda Life Insurance Company	10,962	2.6
SSBT OD05 OMNIBUS ACCOUNT-TREATY CLIENTS	8,105	1.9
NIPPONKOA Insurance Co., Ltd.	7,077	1.7
STATE STREET BANK CLIENT OMNIBUS OM04	6,183	1.5
Mellon Bank, N.A. As Agent For Its Client Mellon Omnibus us Pension	5,297	1.2

Note: Shin-Etsu holds 7,510,657 shares of treasury stock, but is excluded from the above list of major stockholders. Stockholding percentages are calculated excluding treasury stock.

Information:

Public Relations Department
Phone: +81-3-3246-5091
Fax: +81-3-3246-5096
e-mail: sec-pr@shinetsu.jp

Common Stock Price



Trading Volume

