

Investor Information

As of March 31, 2009

Shin-Etsu Chemical Co., Ltd.

Head Office: 6-1, Ohtemachi 2-chome,
Chiyoda-ku, Tokyo 100-0004, Japan

Date of Establishment:

September 16, 1926

Capital:

¥119,420 million

Number of Employees:

19,170 (including 68 consolidated subsidiaries)

Number of Shares Authorized:

1,720,000,000

Number of Shares Issued:

432,106,693

Number of Stockholders:

65,376

Fiscal Year-End:

March 31

Stockholders' Meeting:

June

Stock Listings:

Tokyo, Osaka, Nagoya (Ticker Code: 4063)

Transfer Agent:

Mitsubishi UFJ Trust and Banking Corporation

Auditor:

Ernst & Young ShinNihon

Please visit our website:



<http://www.shinetsu.co.jp>
(English, Japanese and Chinese)

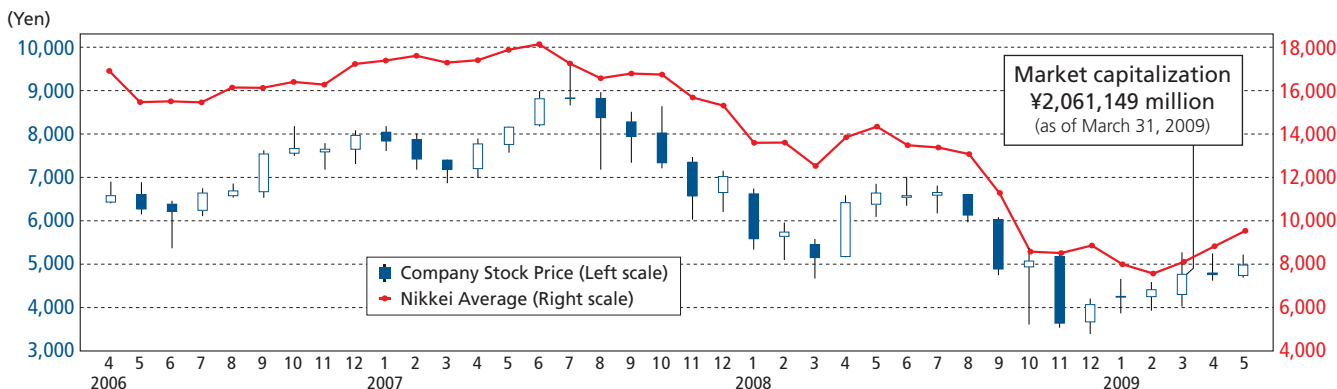
Major Stockholders:

Name	Number of Shares (Thousands)	Percentage of Total Equity (%)
The Master Trust Bank of Japan, Ltd. (Trust account)	41,662	9.8
Japan Trustee Services Bank, Ltd. (Trust account)	35,984	8.5
Nippon Life Insurance Company	24,370	5.7
Japan Trustee Services Bank, Ltd. (Trust account 4G)	20,718	4.9
Japan Trustee Services Bank, Ltd. (Trust account 4)	12,077	2.8
The Hachijuni Bank, Ltd.	11,790	2.8
Meiji Yasuda Life Insurance Company	11,529	2.7
NIPPONKOA Insurance Co., Ltd.	8,077	1.9
JPMorgan Chase Bank 380055	7,424	1.7
The Bank of Tokyo-Mitsubishi UFJ, Ltd.	7,095	1.7

Information:

Public Relations Department
Phone: +81-3-3246-5091
Fax: +81-3-3246-5096
e-mail: sec-pr@shinetsu.jp

Common Stock Price



Trading Volume

