

# Investor Information

As of March 31, 2010

## Shin-Etsu Chemical Co., Ltd.

Head Office: 6-1, Ohtemachi 2-chome,  
Chiyoda-ku, Tokyo 100-0004, Japan

### Date of Establishment:

September 16, 1926

### Capital:

¥119,420 million

### Number of Employees:

16,955 (including 68 consolidated subsidiaries)

### Number of Shares Authorized:

1,720,000,000

### Number of Shares Issued:

432,106,693

### Number of Stockholders:

65,888

### Fiscal Year-End:

March 31

### Stockholders' Meeting:

June

### Stock Listings:

Tokyo, Osaka, Nagoya (Ticker Code: 4063)

### Transfer Agent:

Mitsubishi UFJ Trust and Banking Corporation

### Auditor:

Ernst & Young ShinNihon

Please visit our website:



<http://www.shinetsu.co.jp>  
(English, Japanese and Chinese)

### Major Stockholders:

Name	Number of Shares (Thousands)	Percentage of Total Equity (%)
The Master Trust Bank of Japan, Ltd. (Trust account)	33,920	8.0
Japan Trustee Services Bank, Ltd. (Trust account)	29,278	6.9
Nippon Life Insurance Company	24,370	5.7
JPMortgan Chase Bank 380055	12,085	2.8
The Hachijuni Bank, Ltd.	11,790	2.8
Meiji Yasuda Life Insurance Company	11,529	2.7
Japan Trustee Services Bank, Ltd.(Trust account 4)	11,352	2.7
The Bank of Tokyo-Mitsubishi UFJ, Ltd.	7,095	1.7
NIPPONKOA Insurance Co., Ltd.	7,077	1.7
Fukoku Mutual Life Insurance Company	6,000	1.4

Note: Shin-Etsu holds 7,505,054 shares of treasury stock, but is excluded from the above list of major stockholders. Stockholding percentages are calculated excluding treasury stock.

### Information:

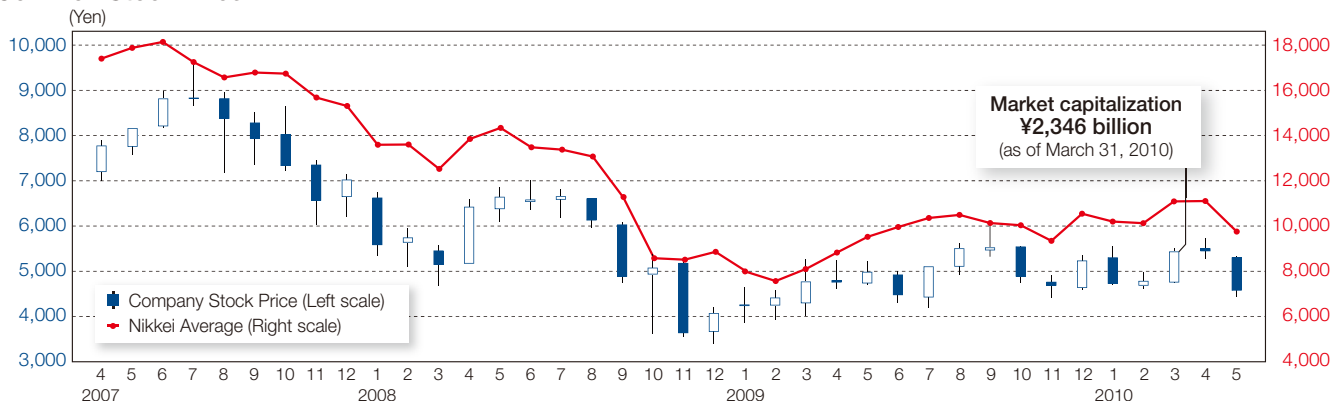
Public Relations Department

Phone: +81-3-3246-5091

Fax: +81-3-3246-5096

e-mail: [sec-pr@shinetsu.jp](mailto:sec-pr@shinetsu.jp)

### Common Stock Price



### Trading Volume

