

# Investor Information

As of March 31, 2008

## Shin-Etsu Chemical Co., Ltd.

Head Office: 6-1, Ohtemachi 2-chome,  
Chiyoda-ku, Tokyo 100-0004, Japan

### Date of Establishment:

September 16, 1926

### Capital:

¥119,420 million

### Number of Employees:

20,241 (including 69 consolidated subsidiaries)

### Number of Shares Authorized:

1,720,000,000

### Number of Shares Issued:

432,106,693

### Number of Shareholders:

64,808

### Fiscal Year-End:

March 31

### Shareholders' Meeting:

June

### Stock Listings:

Tokyo, Osaka, Nagoya (Ticker Code: 4063)

### Transfer Agent:

Mitsubishi UFJ Trust and Banking Corporation

### Auditor:

Ernst & Young ShinNihon

Please visit our website:



<http://www.shinetsu.co.jp>  
(English, Japanese and Chinese)

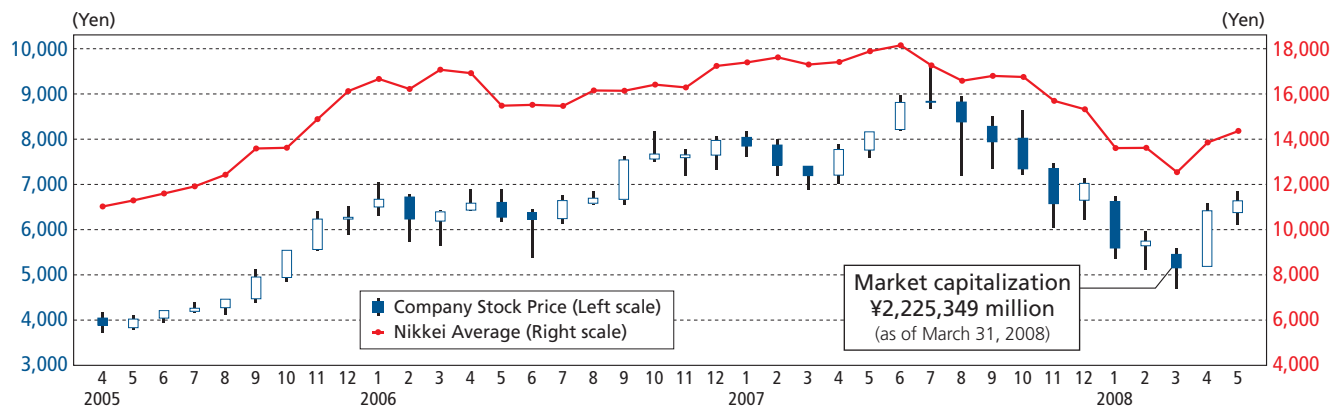
### Major Shareholders:

Name	Number of Shares (Thousands)	Percentage of Total Equity (%)
The Master Trust Bank of Japan, Ltd. (Trust account)	42,218	9.8
Japan Trustee Services Bank, Ltd. (Trust account)	34,320	8.0
Nippon Life Insurance Company	24,370	5.7
Japan Trustee Services Bank, Ltd. (Trust account 4)	14,436	3.4
The Hachijuni Bank, Ltd.	11,790	2.7
Meiji Yasuda Life Insurance Company	11,529	2.7
NIPPONKOA Insurance Co., Ltd.	10,077	2.3
The Bank of Tokyo-Mitsubishi UFJ, Ltd.	7,095	1.6
State Street Bank and Trust Company 505103	6,467	1.5
Fukoku Mutual Life Insurance Company	5,600	1.3

### Information:

Public Relations Department  
6-1, Ohtemachi 2-chome, Chiyoda-ku, Tokyo 100-0004, Japan  
Phone: +81-3-3246-5091  
Fax: +81-3-3246-5096  
e-mail: sec-pr@shinetsu.jp

### Common Stock Price



### Trading Volume

