

Investor Information

As of March 31, 2006

Shin-Etsu Chemical Co., Ltd.

Head Office: 6-1, Ohtemachi 2-chome,
Chiyoda-ku, Tokyo 100-0004, Japan

Date of Establishment:

September 16, 1926

Capital:

¥119,420 million

Number of Employees:

18,888 (including 69 consolidated subsidiaries)

Number of Shares Authorized:

1,720,000,000 (as of June 29, 2006)

Number of Shares Issued:

432,106,693

Number of Shareholders:

52,159

Fiscal Year-End:

March 31

Shareholders' Meeting:

June

Stock Listings:

Tokyo, Osaka, Nagoya (Ticker Code: 4063)

Transfer Agent:

Mitsubishi UFJ Trust and Banking Corporation

Auditor:

Chuo Aoyama PricewaterhouseCoopers

Please visit our website:



<http://www.shinetsu.co.jp>
(English, Japanese and Chinese)



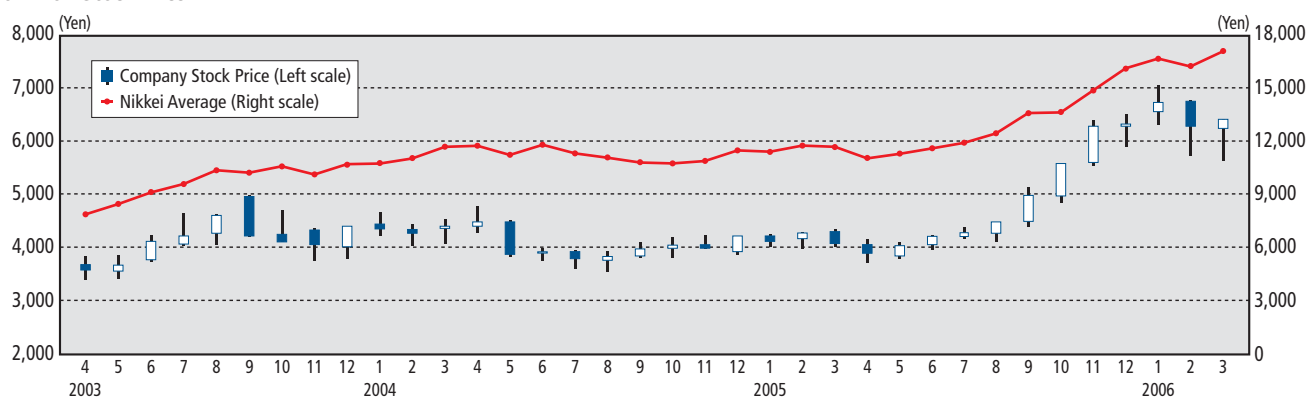
Major Shareholders:

Name	Number of Shares (Thousands)	Percentage of Total Equity (%)
The Master Trust Bank of Japan, Ltd. (Trust account)	42,101	9.7
Japan Trustee Services Bank, Ltd. (Trust account)	37,241	8.6
Nippon Life Insurance Company	21,970	5.1
Japan Trustee Services Bank Ltd. (Trust account 4)	13,207	3.1
The Hachijuni Bank, Ltd.	11,790	2.7
Meiji Yasuda Life Insurance Company	11,529	2.7
NIPPONKOA Insurance Co., Ltd.	10,077	2.3
State Street Bank and Trust Company 505103	9,693	2.2
The Bank of Tokyo-Mitsubishi UFJ, Ltd.	7,095	1.6
State Street Bank and Trust Company	6,071	1.4

Information:

Public Relations Department
6-1, Ohtemachi 2-chome, Chiyoda-ku, Tokyo 100-0004, Japan
Phone: +81-3-3246-5091
Fax: +81-3-3246-5096
e-mail: sec-pr@shinetsu.jp

Common Stock Price



Trading Volume

