

2006年3月期決算業績概要

Financial Summary

As of March 31, 2006

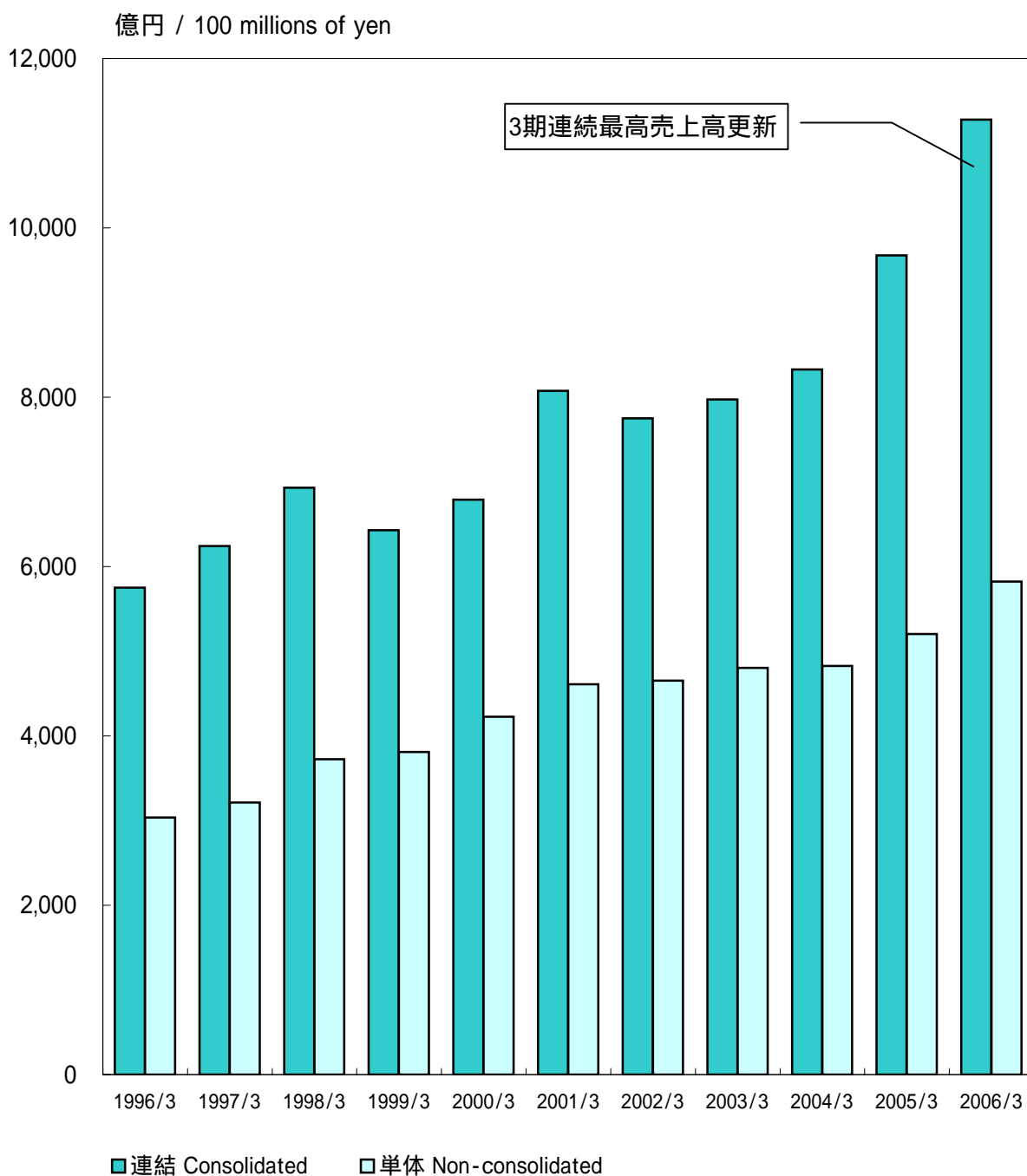
目次 Contents

売上高	1
Net Sales	
営業利益	2
Operating Income	
経常利益	3
Ordinary Income	
当期純利益	4
Net Income	
一株当たり当期純利益	5
Net Income per Share	
連結 セグメント別売上高	6
Net Sales by Segment (Consolidated)	
連結 セグメント別営業利益	7
Operating Income by Segment (Consolidated)	
売上高経常利益率、売上高当期純利益率	8
Ordinary Income to Net Sales Ratio, Net Income to Net Sales Ratio	
総資産、株主資本	9
Total Assets, Total Stockholder's Equity	
連結 株主資本比率・株主資本当期純利益率・総資本経常利益率	10
Equity Ratio, Return on Equity, Return (Ordinary Income) on Total Assets (Consolidated)	
連結 設備投資額・キャッシュフロー	11
Capital Expenditure and Cash Flow (Consolidated)	



信越化学工業株式会社
Shin-Etsu Chemical Co., Ltd.

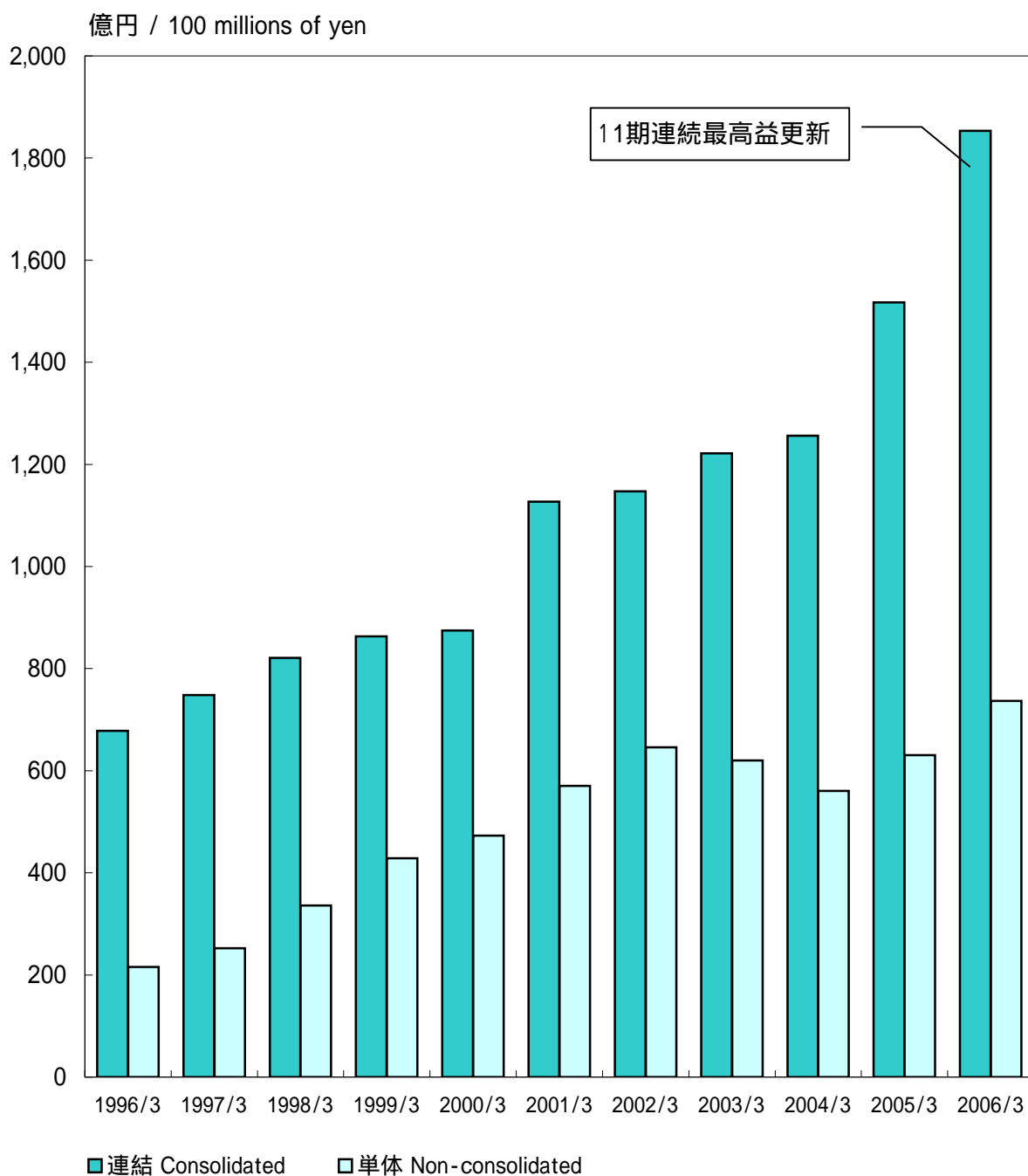
売上高 Net Sales



(百万円 / millions of yen)

		1996/3	1997/3	1998/3	1999/3	2000/3	2001/3	2002/3	2003/3	2004/3	2005/3	2006/3
売上高 Net Sales	連結 Consolidated	575,175	624,405	693,274	642,795	678,858	807,484	775,096	797,523	832,804	967,486	1,127,915
	単体 Non-consolidated	303,548	321,202	372,304	381,069	422,508	461,008	465,333	480,243	482,580	520,289	582,426
売上高連単倍率(倍) Consolidated to Non-consolidated Net Sales Ratio (times)		1.89	1.94	1.86	1.69	1.61	1.75	1.67	1.66	1.73	1.86	1.94

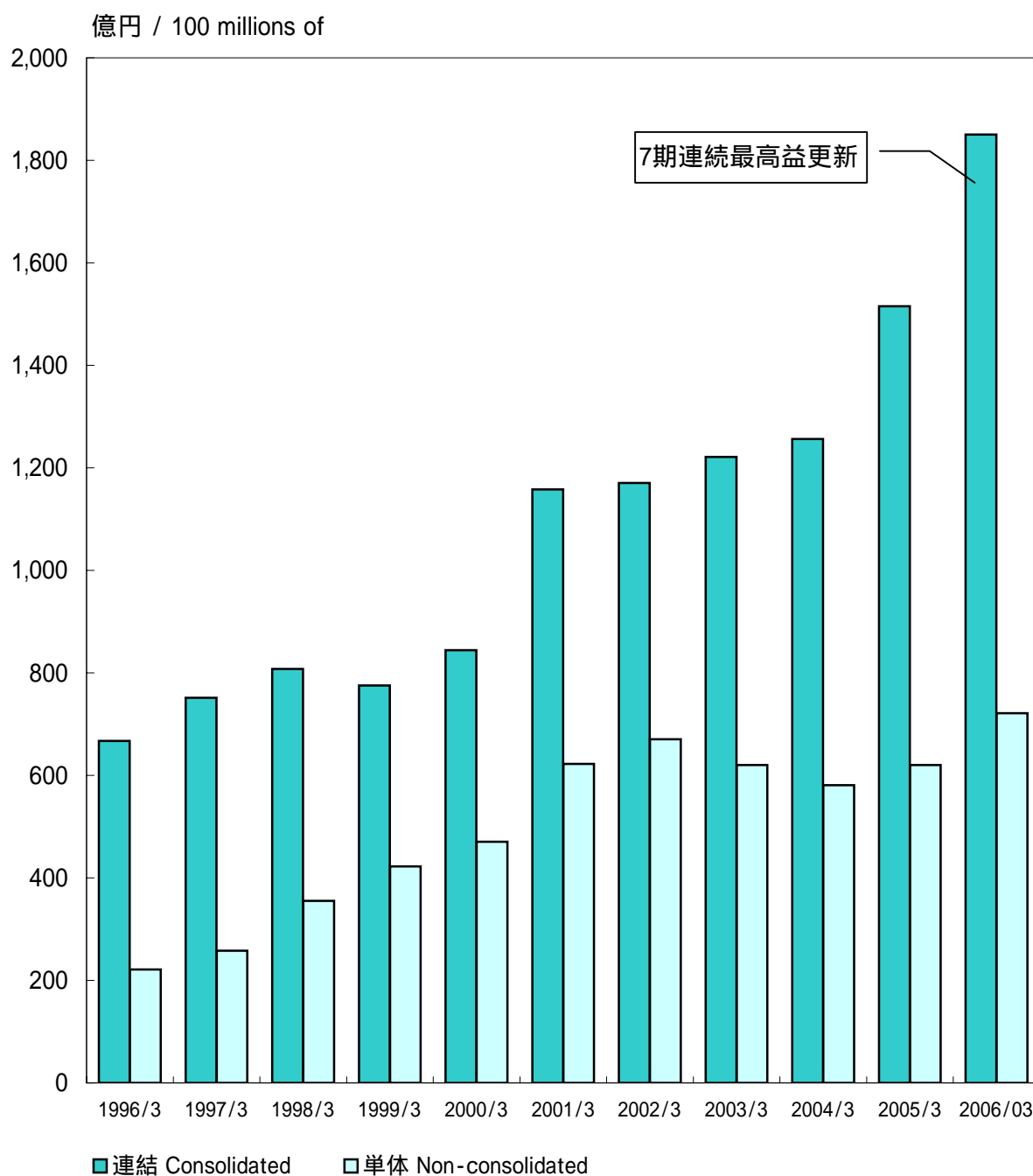
営業利益 Operating Income



(百万円 / millions of yen)

		1996/3	1997/3	1998/3	1999/3	2000/3	2001/3	2002/3	2003/3	2004/3	2005/3	2006/3
営業利益 Operating Income	連結 Consolidated	67,802	74,820	82,079	86,322	87,465	112,677	114,723	122,149	125,625	151,734	185,320
	単体 Non-consolidated	21,578	25,229	33,597	42,868	47,267	57,039	64,612	62,014	56,073	63,081	73,685

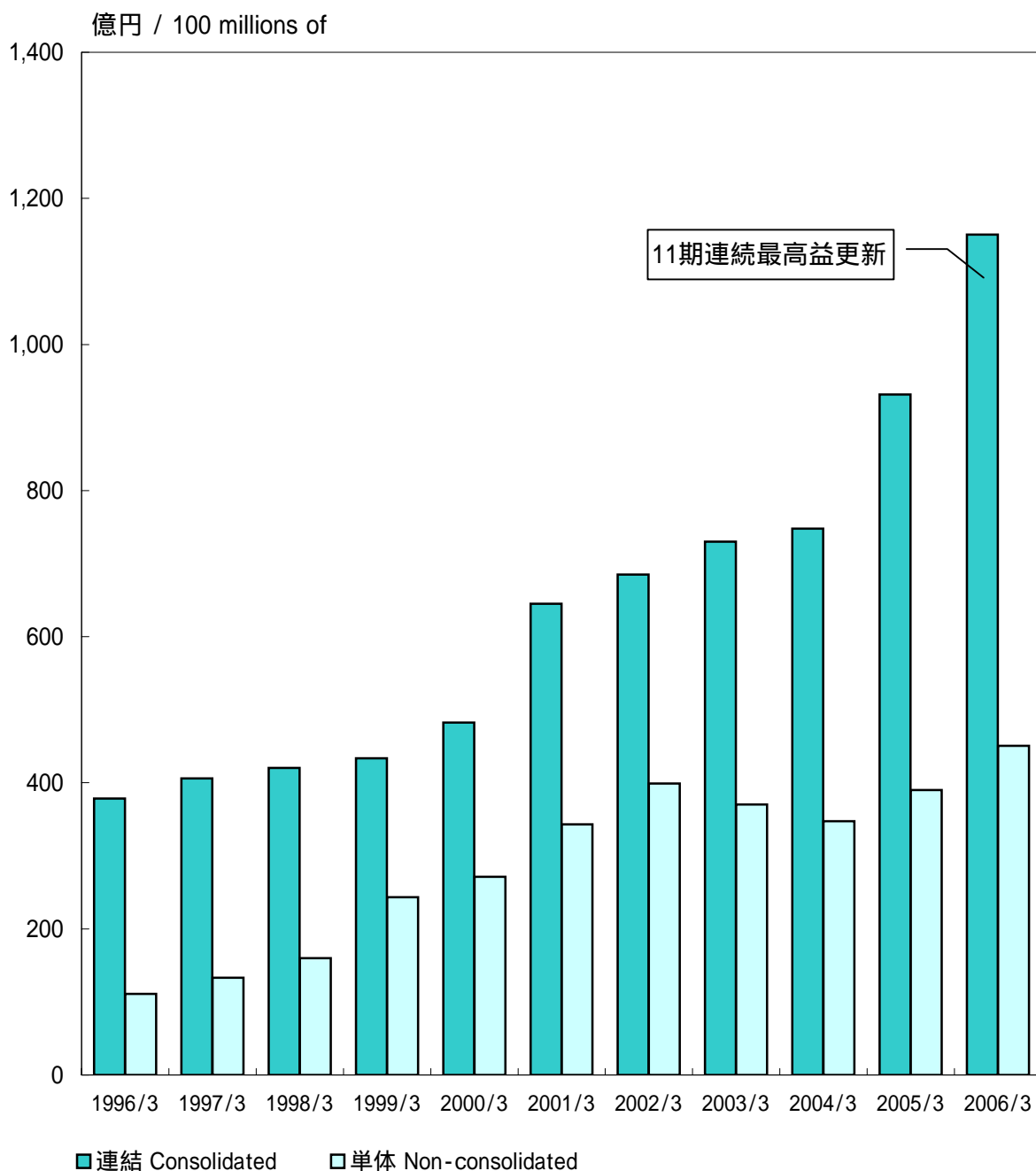
經常利益 Ordinary Income



(百万円 / millions of yen)

		1996/3	1997/3	1998/3	1999/3	2000/3	2001/3	2002/3	2003/3	2004/3	2005/3	2006/3
經常利益 Ordinary Income	連結 Consolidated	66,716	75,127	80,742	77,551	84,423	115,797	117,031	122,119	125,612	151,503	185,040
	単体 Non-consolidated	22,153	25,803	35,542	42,231	47,040	62,224	67,032	62,011	58,065	62,030	72,115

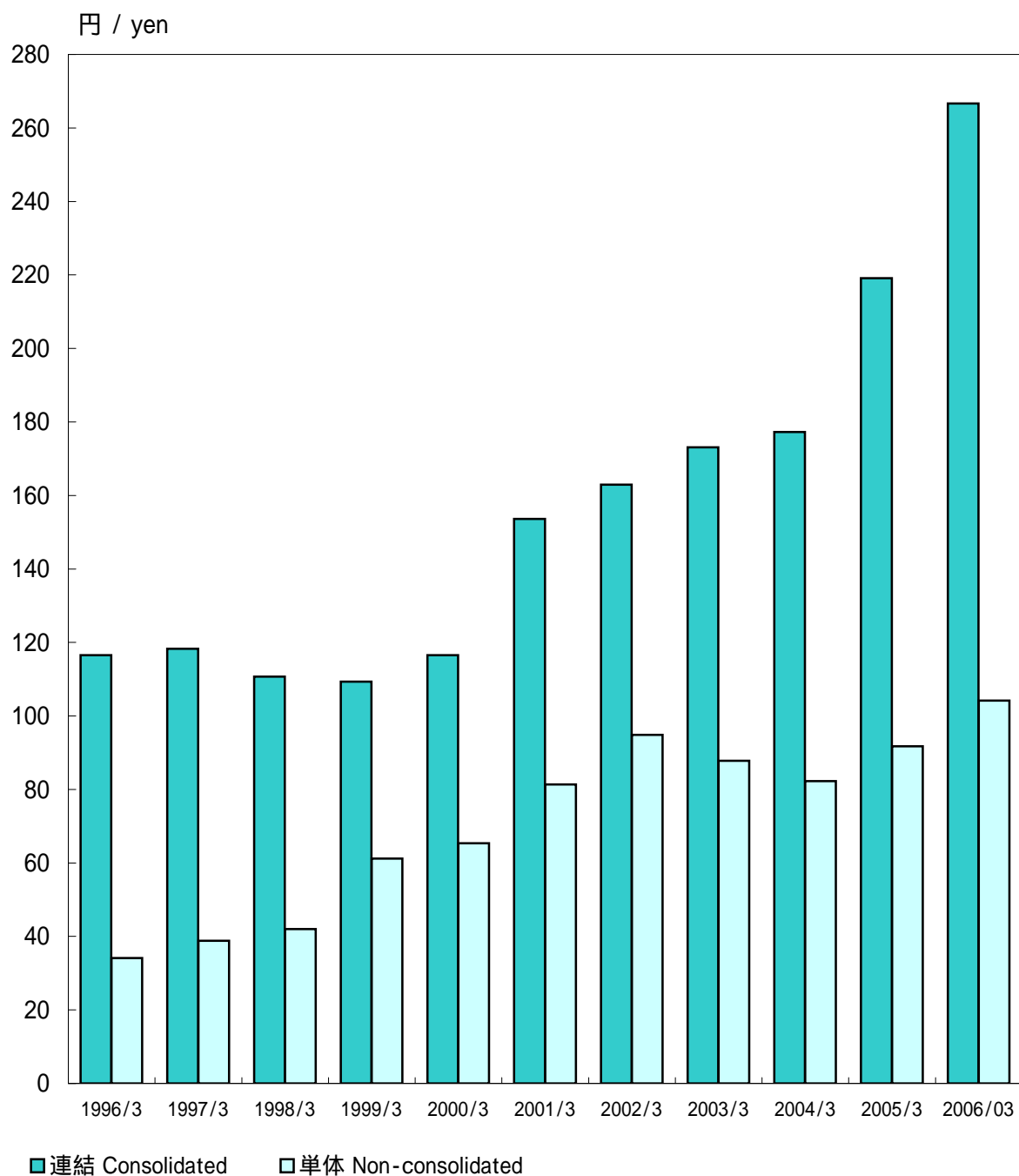
当期純利益 Net Income



(百万円 / millions of yen)

		1996/3	1997/3	1998/3	1999/3	2000/3	2001/3	2002/3	2003/3	2004/3	2005/3	2006/3
当期純利益 Net Income	連結 Consolidated	37,825	40,614	42,027	43,362	48,229	64,505	68,518	73,015	74,805	93,160	115,045
	単体 Non-consolidated	11,083	13,323	15,972	24,322	27,141	34,307	39,888	37,028	34,725	39,020	45,065
当期純利益連単倍率(倍) Consolidated to Non-consolidated Net Income Ratio (times)		3.41	3.05	2.63	1.78	1.78	1.88	1.72	1.97	2.15	2.39	2.55

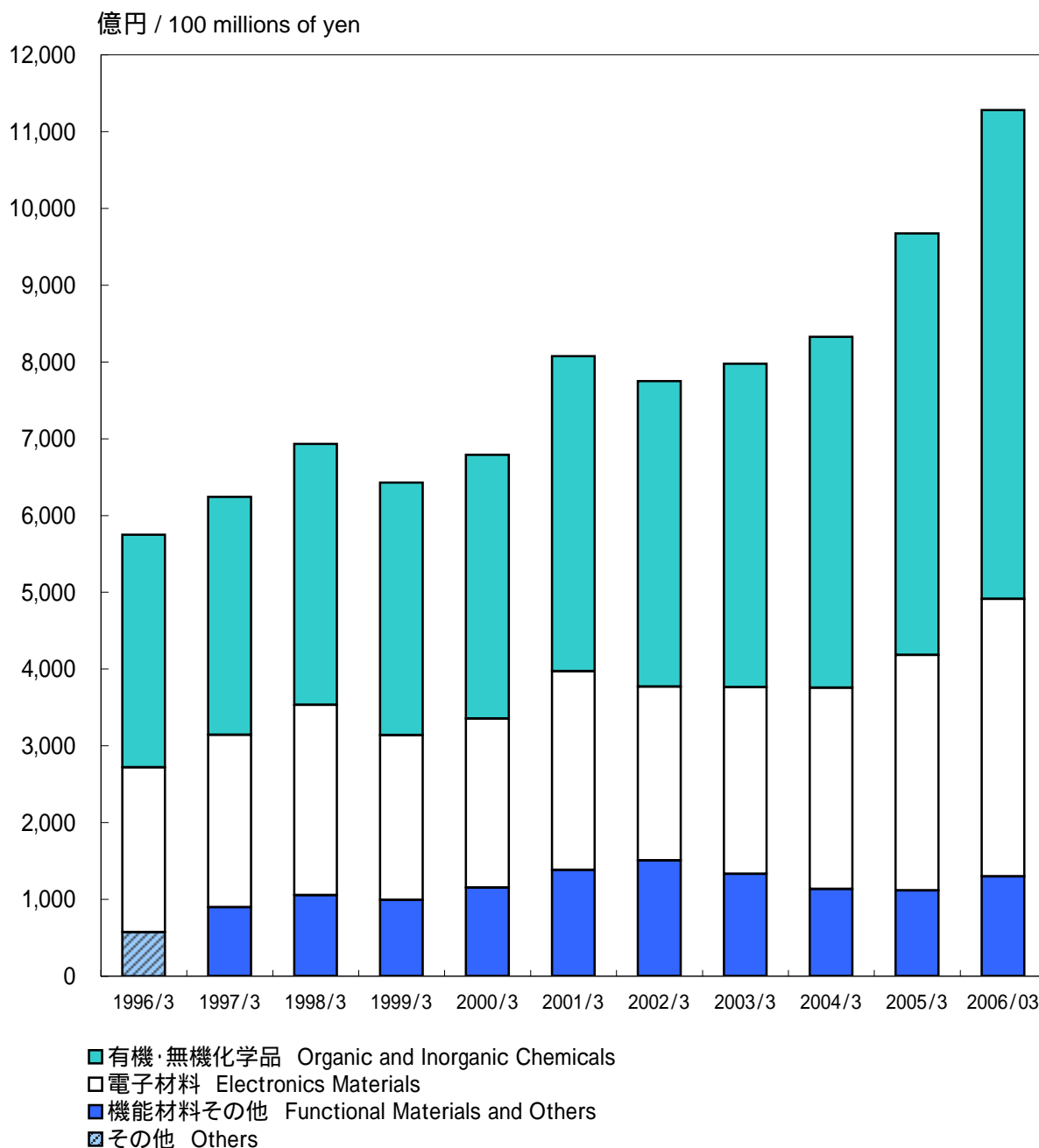
一株当たり当期純利益 Net Income per Share



(円 / yen)

		1996/3	1997/3	1998/3	1999/3	2000/3	2001/3	2002/3	2003/3	2004/3	2005/3	2006/3
一株当たり 当期純利益 Net Income per Share	連結 Consolidated	116.51	118.24	110.73	109.36	116.56	153.58	162.93	173.13	177.25	219.10	266.63
	単体 Non-consolidated	34.14	38.79	42.02	61.15	65.32	81.32	94.85	87.83	82.25	91.73	104.21

連結 セグメント別売上高 Net Sales by Segment (Consolidated)



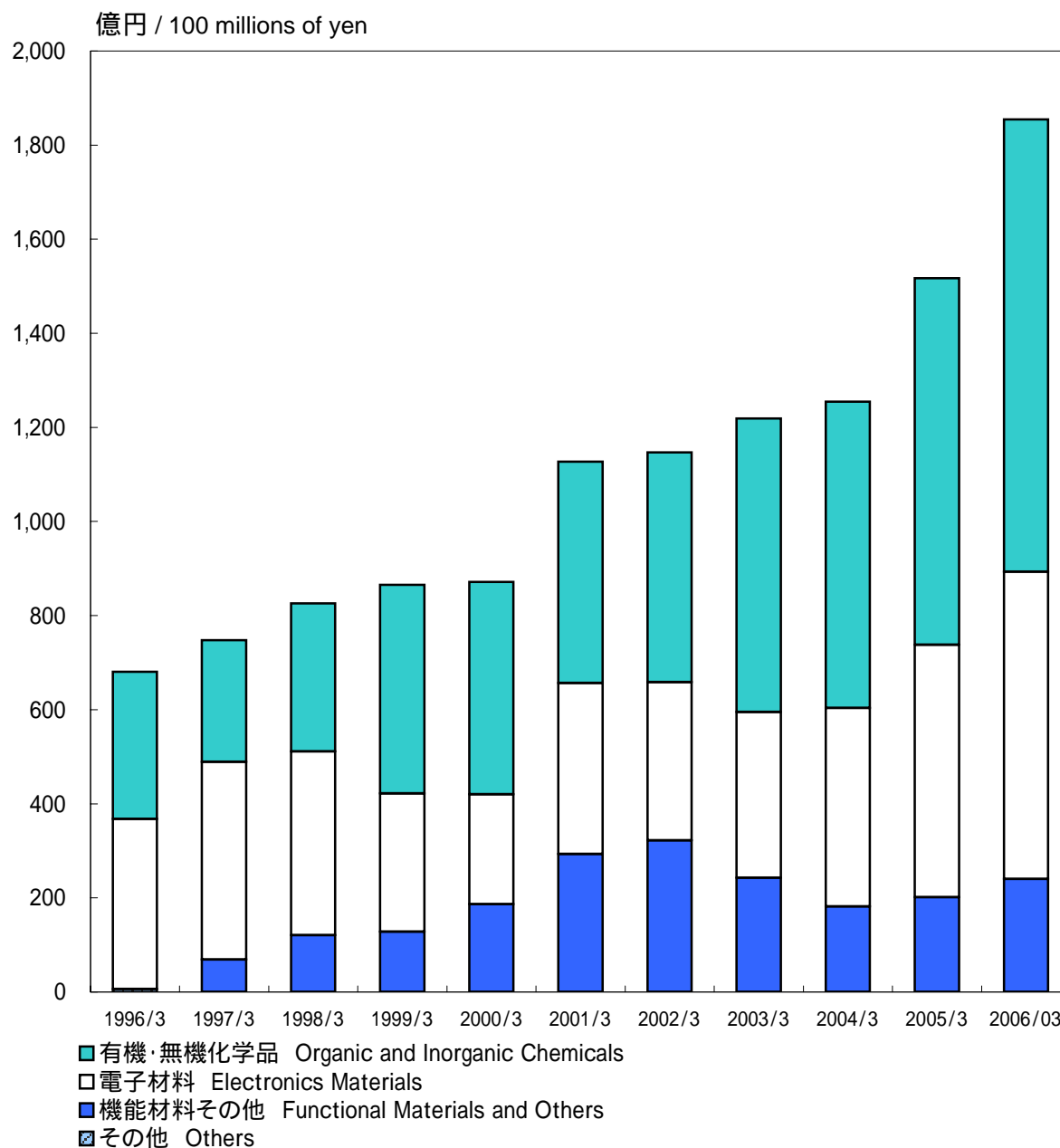
(百万円 / millions of yen)

	1996/3	1997/3	1998/3	1999/3	2000/3	2001/3	2002/3	2003/3	2004/3	2005/3	2006/3
有機・無機化学品 Organic and Inorganic Chemicals	303,284	310,030	340,050	328,925	343,412	410,370	397,983	421,021	457,009	548,950	636,491
電子材料 Electronics Materials	214,635	224,607	247,707	214,604	220,131	258,746	226,459	243,427	262,245	306,925	361,452
機能材料その他 Functional Materials and Others	-	89,767	105,515	99,265	115,314	138,367	150,652	133,074	113,550	111,610	129,970
その他 Others	57,255	-	-	-	-	-	-	-	-	-	-

注: 1997年3月期よりセグメントを変更しております。

Note: Segment Categories have been reclassified from the year ended March 31, 1997

連結 セグメント別営業利益 Operating Income by Segment (Consolidated)



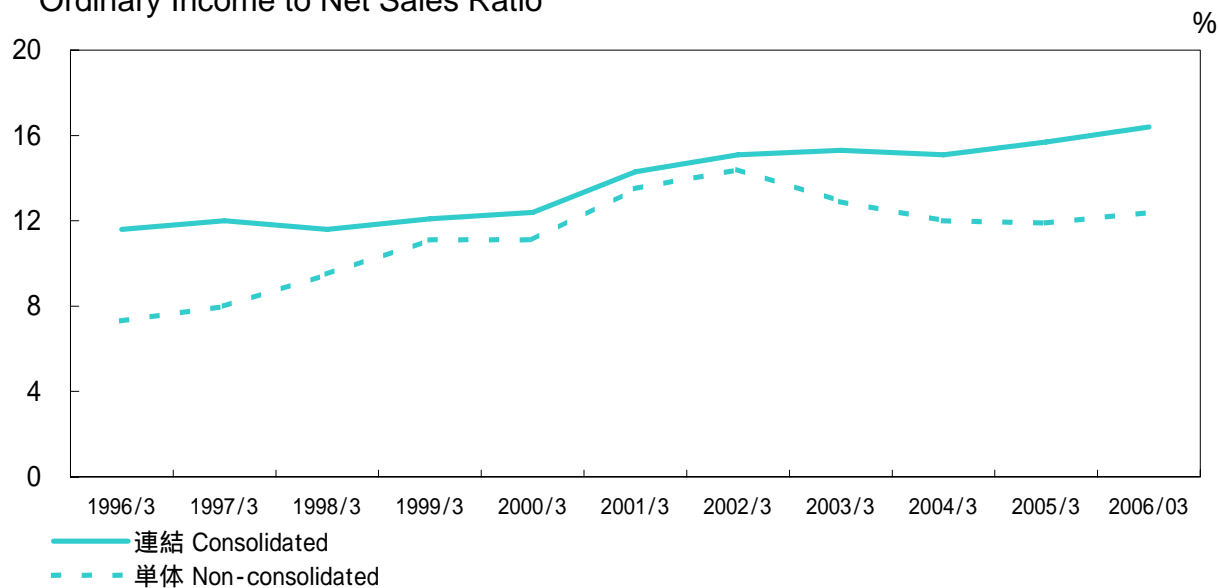
(百万円 / millions of yen)

	1996/3	1997/3	1998/3	1999/3	2000/3	2001/3	2002/3	2003/3	2004/3	2005/3	2006/03
有機・無機化学品 Organic and Inorganic Chemicals	31,296	25,913	31,492	44,365	45,162	47,015	48,807	62,409	65,112	77,894	96,171
電子材料 Electronics Materials	36,146	42,014	39,044	29,398	23,344	36,360	33,678	35,248	42,182	53,684	65,275
機能材料その他 Functional Materials and Others	-	6,869	12,061	12,797	18,651	29,328	32,193	24,251	18,169	20,123	24,022
その他 Others	619	-	-	-	-	-	-	-	-	-	-

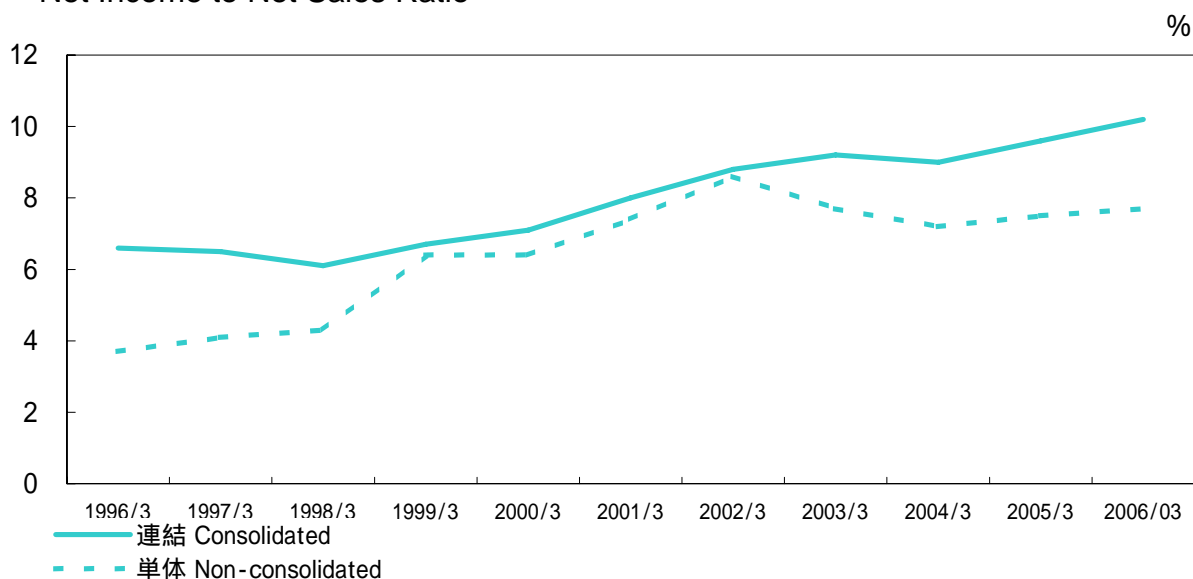
注：1997年3月期よりセグメントを変更しております。

Note: Segment Categories have been reclassified from the year ended March 31, 1997

売上高経常利益率 Ordinary Income to Net Sales Ratio



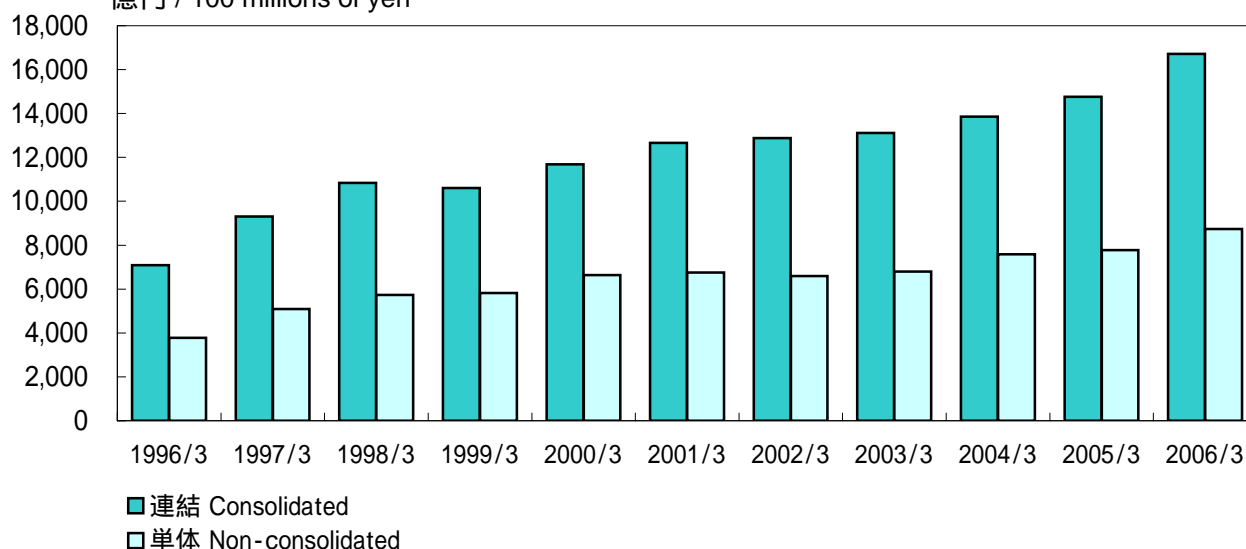
売上高当期純利益率 Net Income to Net Sales Ratio



		(%)										
		1996/3	1997/3	1998/3	1999/3	2000/3	2001/3	2002/3	2003/3	2004/3	2005/3	2006/03
売上高 経常利益率 Ordinary Income to Net Sales Ratio	連結 Consolidated	11.6	12.0	11.6	12.1	12.4	14.3	15.1	15.3	15.1	15.7	16.4
	単体 Non-consolidated	7.3	8.0	9.5	11.1	11.1	13.5	14.4	12.9	12.0	11.9	12.4
売上高 当期純利益率 Net Income to Net Sales Ratio	連結 Consolidated	6.6	6.5	6.1	6.7	7.1	8.0	8.8	9.2	9.0	9.6	10.2
	単体 Non-consolidated	3.7	4.1	4.3	6.4	6.4	7.4	8.6	7.7	7.2	7.5	7.7

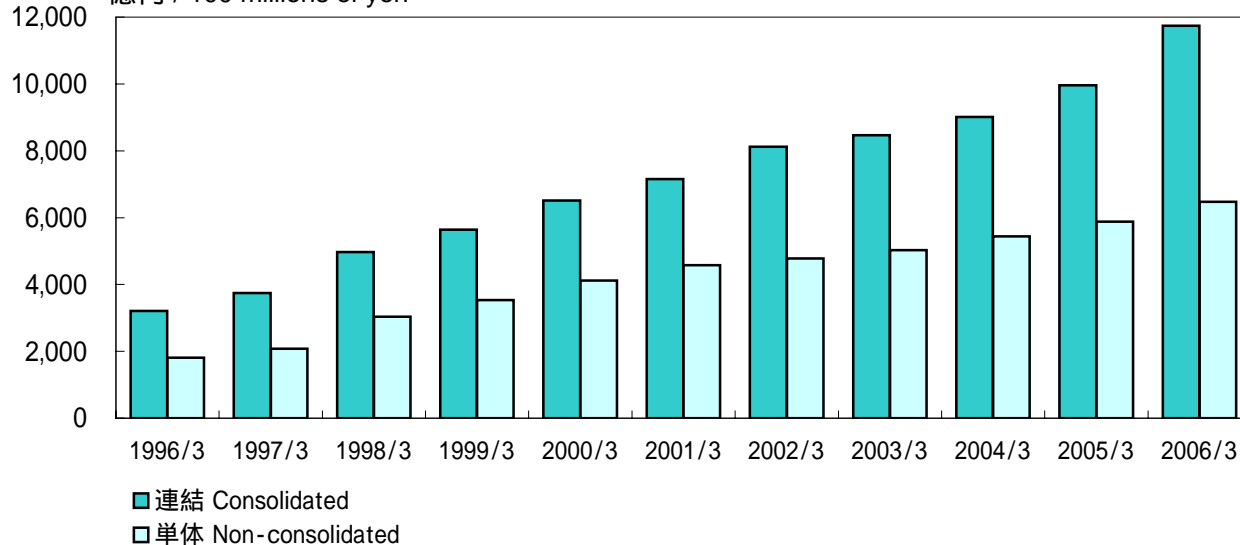
総資産 Total Assets

億円 / 100 millions of yen



株主資本 Total Stockholders' Equity

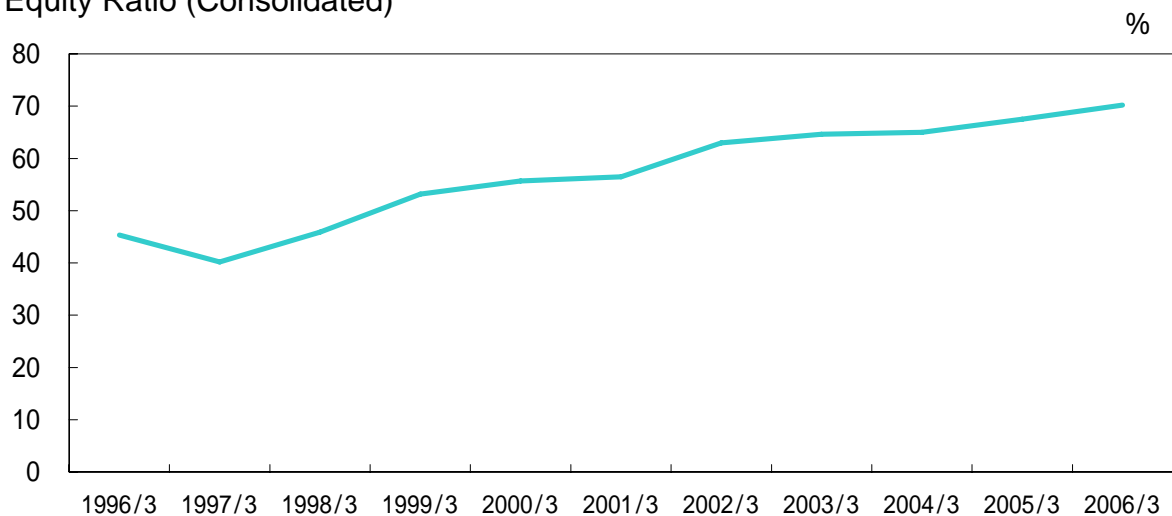
億円 / 100 millions of yen



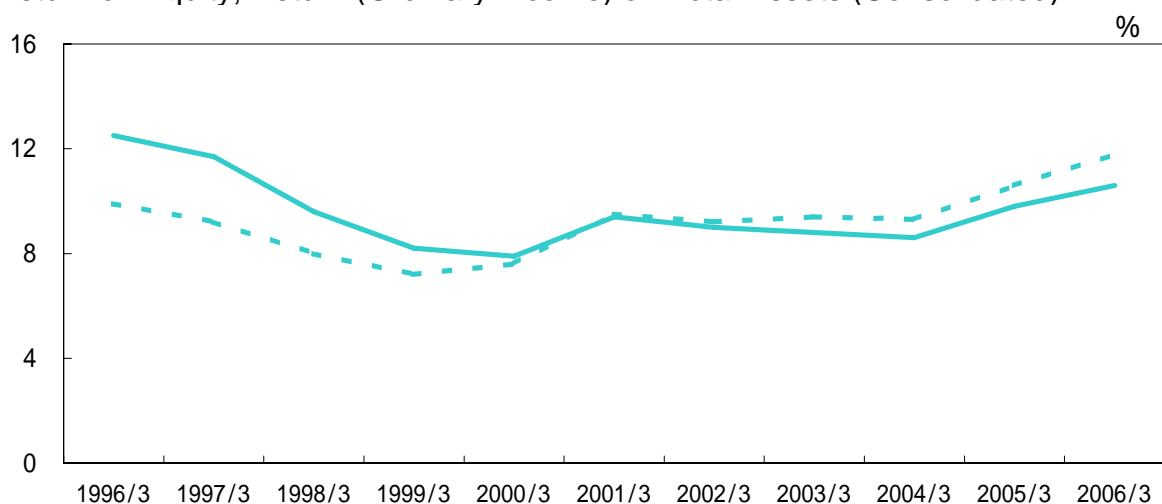
(百万円 / millions of yen)

		1996/3	1997/3	1998/3	1999/3	2000/3	2001/3	2002/3	2003/3	2004/3	2005/3	2006/3
総資産 Total Assets	連結 Consolidated	708,636	931,158	1,083,780	1,060,973	1,168,729	1,265,799	1,288,432	1,310,874	1,386,216	1,476,248	1,671,280
	単体 Non-consolidated	377,679	508,737	573,105	581,632	663,813	675,403	659,852	679,380	758,820	777,928	874,186
株主資本 Total Stockholders' Equity	連結 Consolidated	320,987	374,725	497,311	564,066	651,261	714,996	812,068	846,961	900,724	996,307	1,173,679
	単体 Non-consolidated	181,119	207,491	303,911	353,305	412,216	457,786	478,180	502,912	544,266	588,048	647,050

連結 株主資本比率
Equity Ratio (Consolidated)



連結 株主資本当期純利益率、連結 総資本經常利益率
Return on Equity, Return (Ordinary Income) on Total Assets (Consolidated)

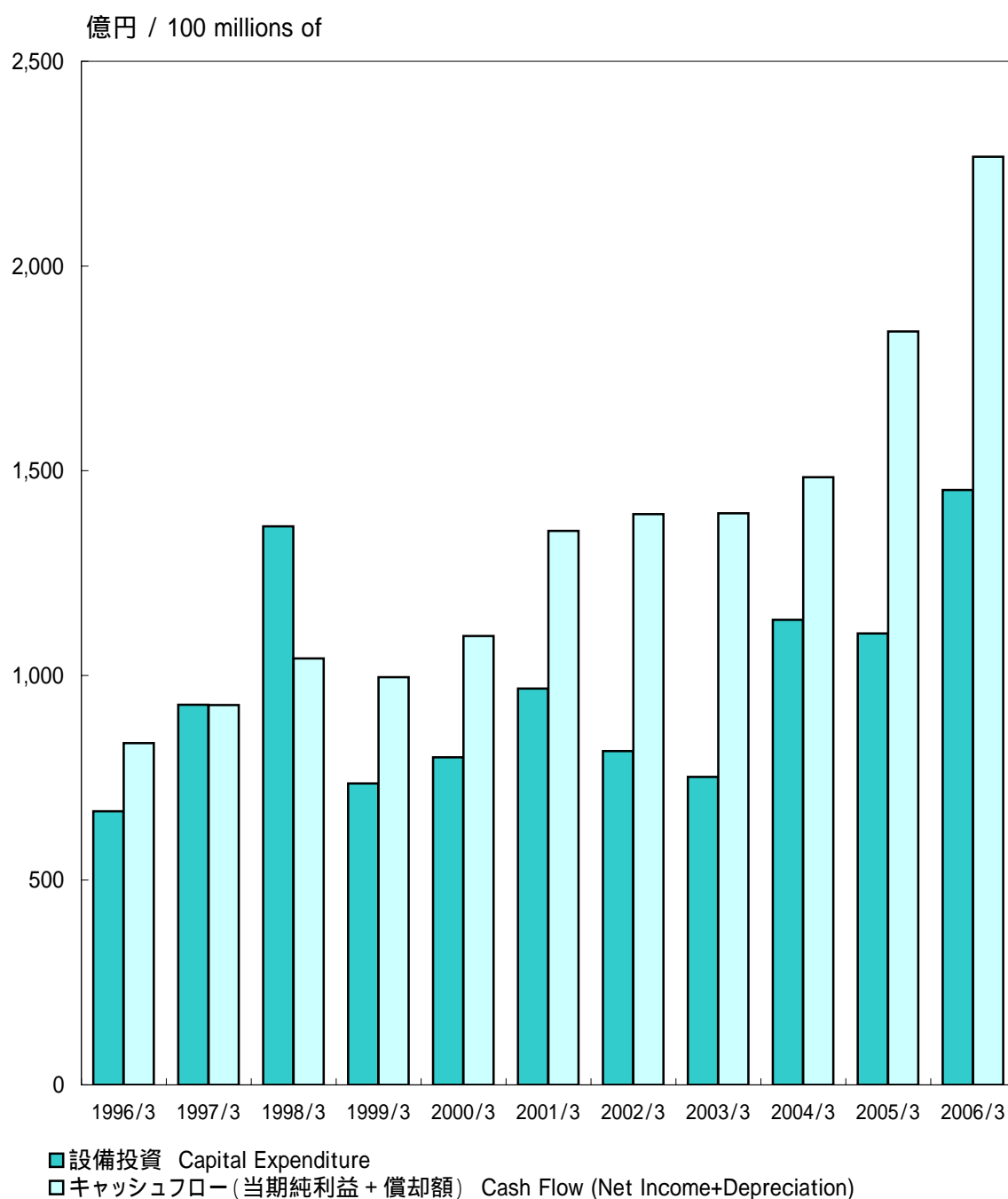


— 株主資本当期純利益率 Return on Equity
- - 総資本經常利益率 Return (Ordinary Income) on Total Assets

(%)

		1996/3	1997/3	1998/3	1999/3	2000/3	2001/3	2002/3	2003/3	2004/3	2005/3	2006/3
株主資本比率 Equity Ratio	連結 Consolidated	45.3	40.2	45.9	53.2	55.7	56.5	63.0	64.6	65.0	67.5	70.2
株主資本 当期純利益率 Return on Equity	連結 Consolidated	12.5	11.7	9.6	8.2	7.9	9.4	9.0	8.8	8.6	9.8	10.6
総資本 經常利益率 Return (Ordinary Income) on Total Assets	連結 Consolidated	9.9	9.2	8.0	7.2	7.6	9.5	9.2	9.4	9.3	10.6	11.8

連結 設備投資額・キャッシュフロー Capital Expenditure and Cash Flow (Consolidated)



(百万円 / millions of yen)

	1996/3	1997/3	1998/3	1999/3	2000/3	2001/3	2002/3	2003/3	2004/3	2005/3	2006/3
設備投資額 Capital Expenditure	66,790	92,844	136,383	73,641	80,003	96,770	81,543	75,220	113,591	110,277	145,329
減価償却費 Depreciation	45,646	52,190	62,143	56,196	61,384	70,767	70,878	66,566	73,581	90,874	111,637
キャッシュフロー (当期純利益 + 償却費) Cash Flow (Net Income+Depreciation)	83,471	92,804	104,170	99,558	109,613	135,272	139,396	139,581	148,387	184,035	226,682