

# 2005年3月期決算業績概要

## Financial Summary

As of March 31, 2005

### 目次 Contents

売上高	1
Net Sales	
営業利益	2
Operating Income	
経常利益	3
Ordinary Income	
当期純利益	4
Net Income	
一株当たり当期純利益	5
Net Income per Share	
連結 セグメント別売上高	6
Net Sales by Segment (Consolidated)	
連結 セグメント別営業利益	7
Operating Income by Segment (Consolidated)	
売上高経常利益率、売上高当期純利益率	8
Ordinary Income to Net Sales Ratio, Net Income to Net Sales Ratio	
総資産、株主資本	9
Total Assets, Total Stockholder's Equity	
連結 株主資本比率・株主資本当期純利益率・総資本経常利益率	10
Equity Ratio, Return on Equity, Return (Ordinary Income) on Total Assets (Consolidated)	
連結 設備投資額・キャッシュフロー	11
Capital Expenditure and Cash Flow (Consolidated)	

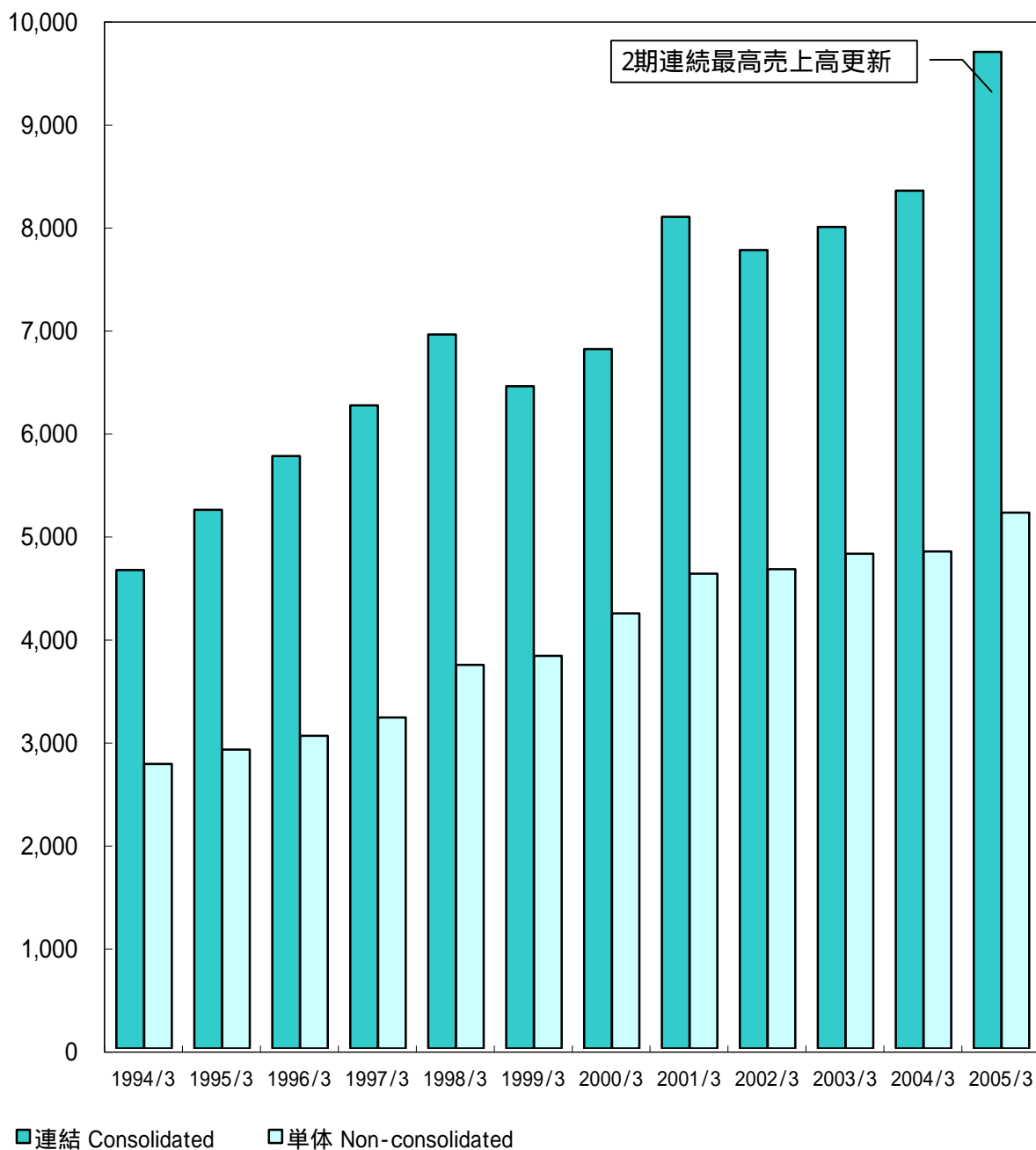


信越化学工業株式会社  
Shin-Etsu Chemical Co., Ltd.

2005年5月作成  
Printed in May 2005

# 売上高 Net Sales

億円 / 100 millions of yen

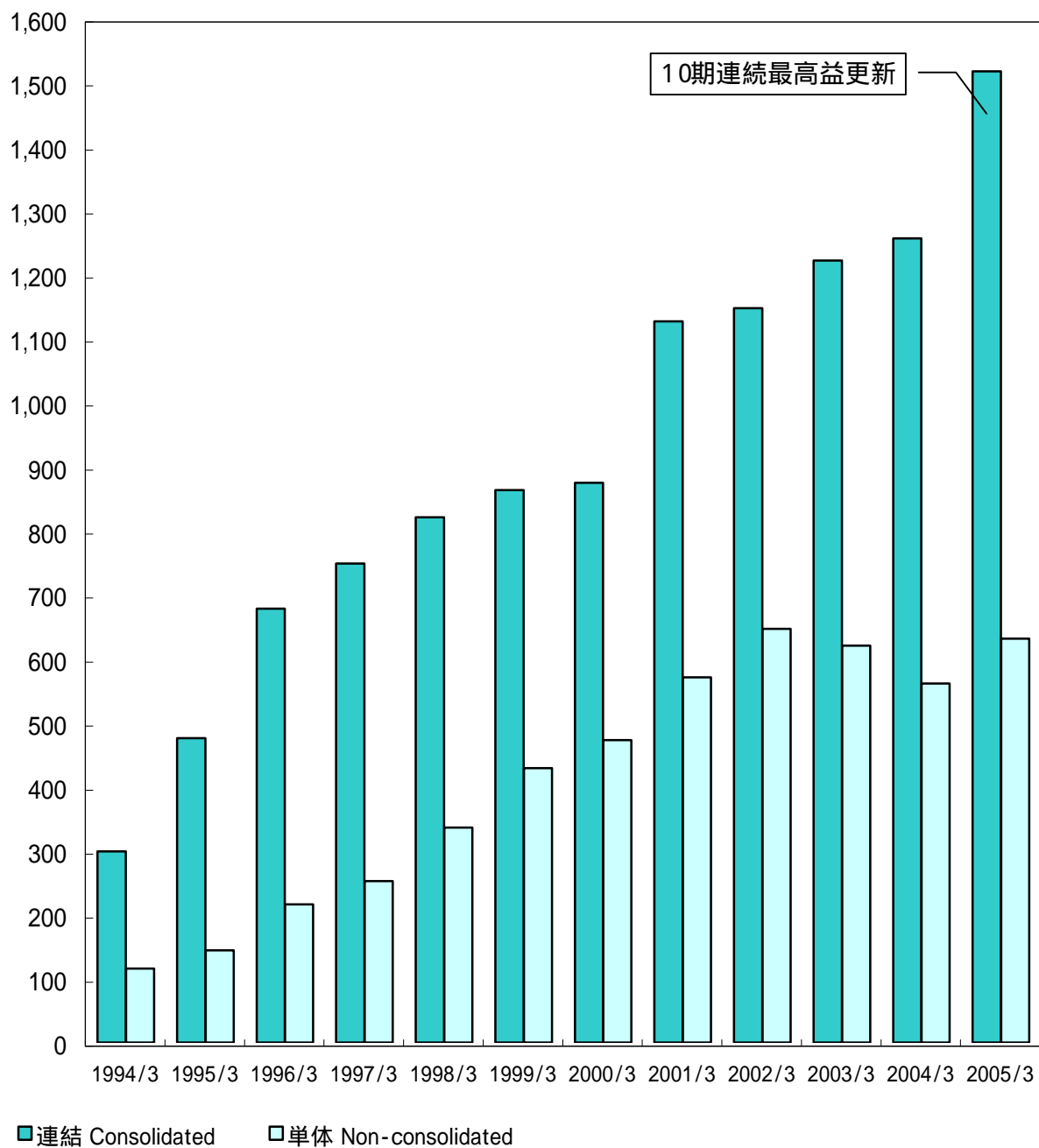


(百万円 / millions of yen)

		1994/3	1995/3	1996/3	1997/3	1998/3	1999/3	2000/3	2001/3	2002/3	2003/3	2004/3	2005/3
売上高 Net Sales	連結 Consolidated	464,448	522,917	575,175	624,405	693,274	642,795	678,858	807,484	775,096	797,523	832,804	967,486
	単体 Non-consolidated	276,169	290,083	303,548	321,202	372,304	381,069	422,508	461,008	465,333	480,243	482,580	520,289
売上高連単倍率(倍) Consolidated to Non-consolidated Net Sales Ratio (times)		1.68	1.80	1.89	1.94	1.86	1.69	1.61	1.75	1.67	1.66	1.73	1.86

## 営業利益 Operating Income

億円 / 100 millions of yen

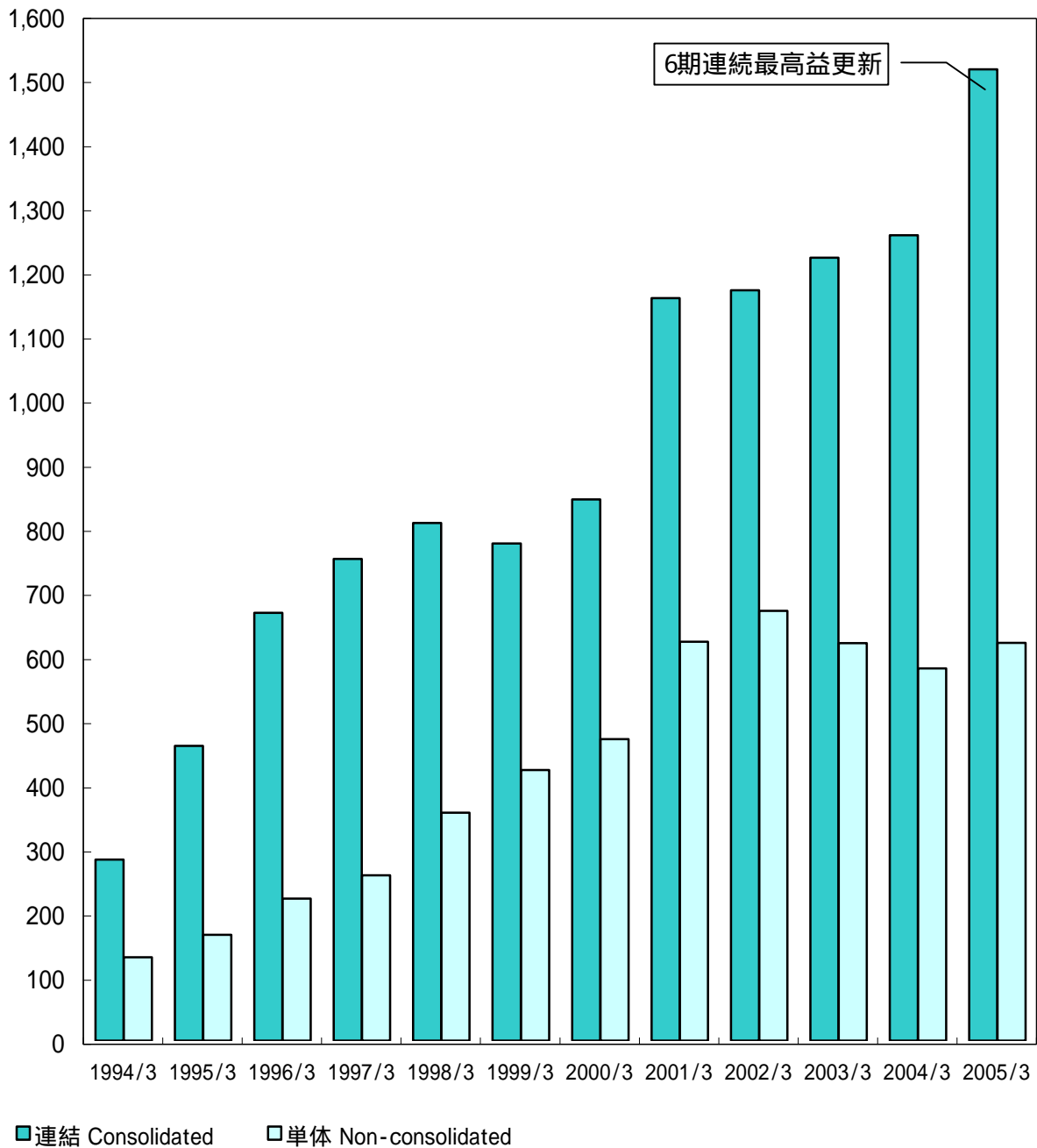


(百万円 / millions of yen)

		1994/3	1995/3	1996/3	1997/3	1998/3	1999/3	2000/3	2001/3	2002/3	2003/3	2004/3	2005/3
営業利益 Operating Income	連結 Consolidated	29,850	47,562	67,802	74,820	82,079	86,322	87,465	112,677	114,723	122,149	125,625	151,734
	単体 Non-consolidated	11,557	14,426	21,578	25,229	33,597	42,868	47,267	57,039	64,612	62,014	56,073	63,081

## 經常利益 Ordinary Income

億円 / 100 millions of yen

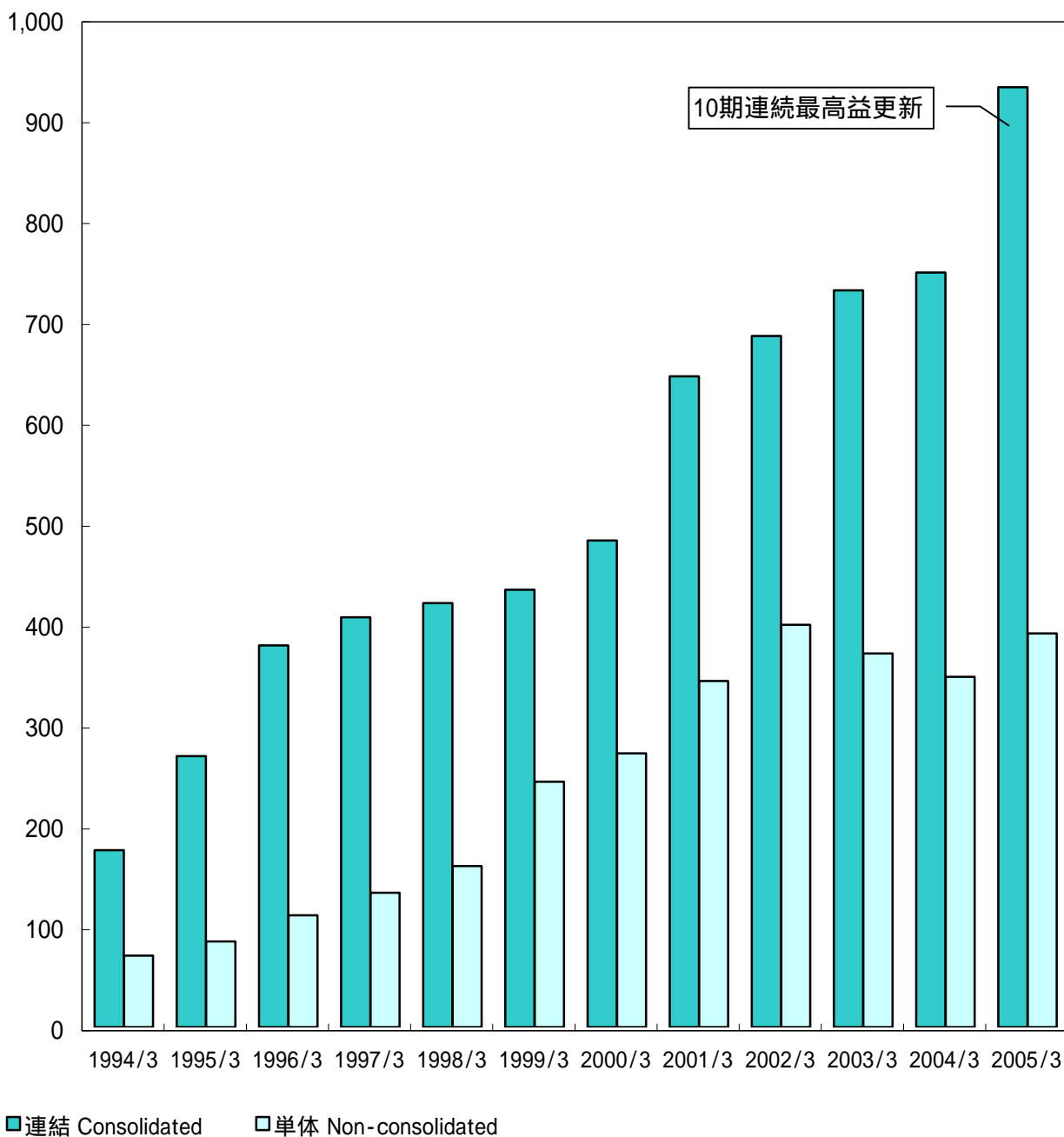


(百万円 / millions of yen)

		1994/3	1995/3	1996/3	1997/3	1998/3	1999/3	2000/3	2001/3	2002/3	2003/3	2004/3	2005/3
經常利益 Ordinary Income	連結 Consolidated	28,262	45,965	66,716	75,127	80,742	77,551	84,423	115,797	117,031	122,119	125,612	151,503
	単体 Non-consolidated	13,021	16,524	22,153	25,803	35,542	42,231	47,040	62,224	67,032	62,011	58,065	62,030

## 当期純利益 Net Income

億円 / 100 millions of yen

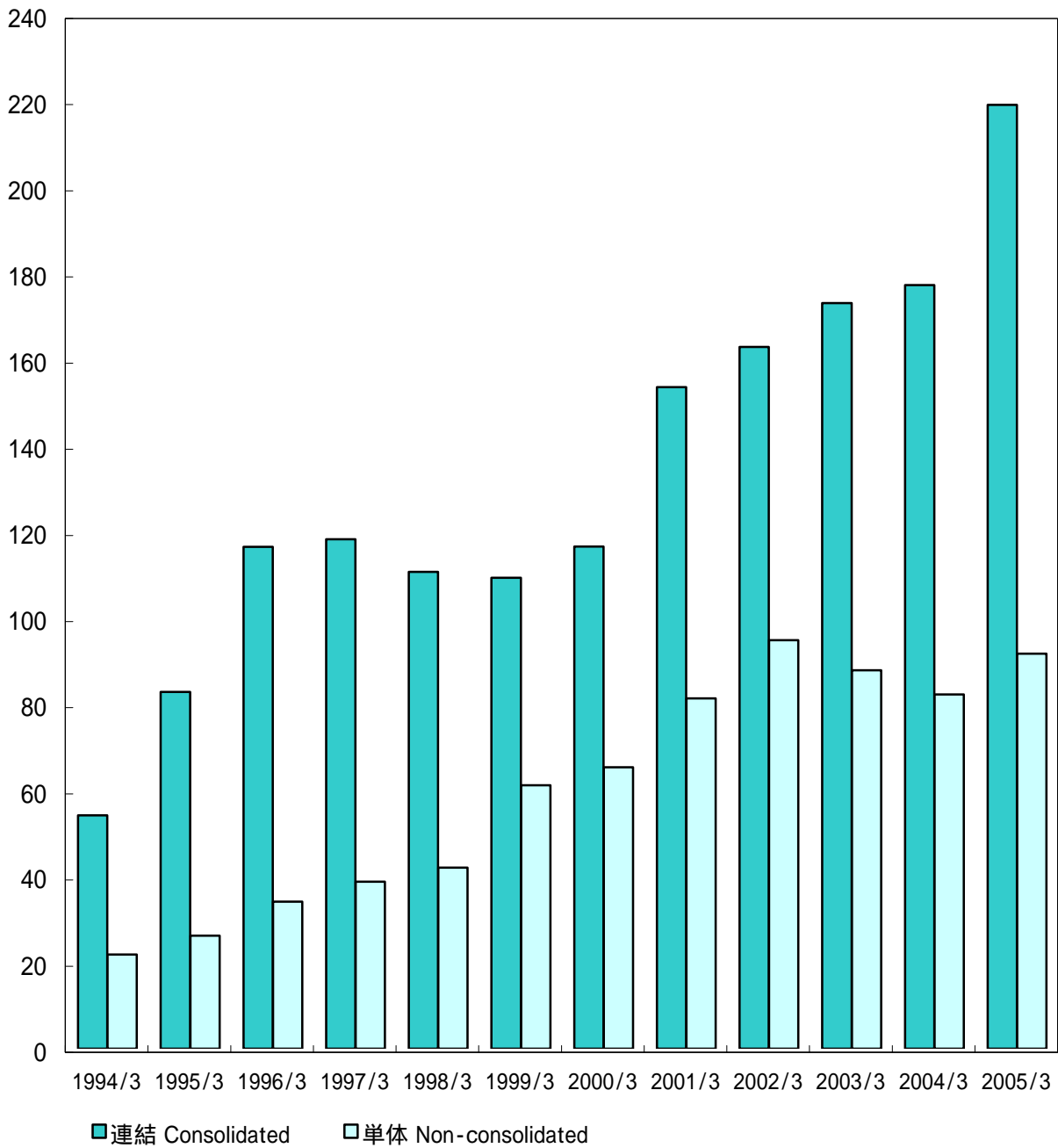


(百万円 / millions of yen)

		1994/3	1995/3	1996/3	1997/3	1998/3	1999/3	2000/3	2001/3	2002/3	2003/3	2004/3	2005/3
当期純利益 Net Income	連結 Consolidated	17,546	26,862	37,825	40,614	42,027	43,362	48,229	64,505	68,518	73,015	74,805	93,160
	単体 Non-consolidated	7,077	8,504	11,083	13,323	15,972	24,322	27,141	34,307	39,888	37,028	34,725	39,020
当期純利益連単倍率(倍) Consolidated to Non-consolidated Net Income Ratio (times)		2.48	3.16	3.41	3.05	2.63	1.78	1.78	1.88	1.72	1.97	2.15	2.39

## 一株当たり当期純利益 Net Income per Share

円 / yen

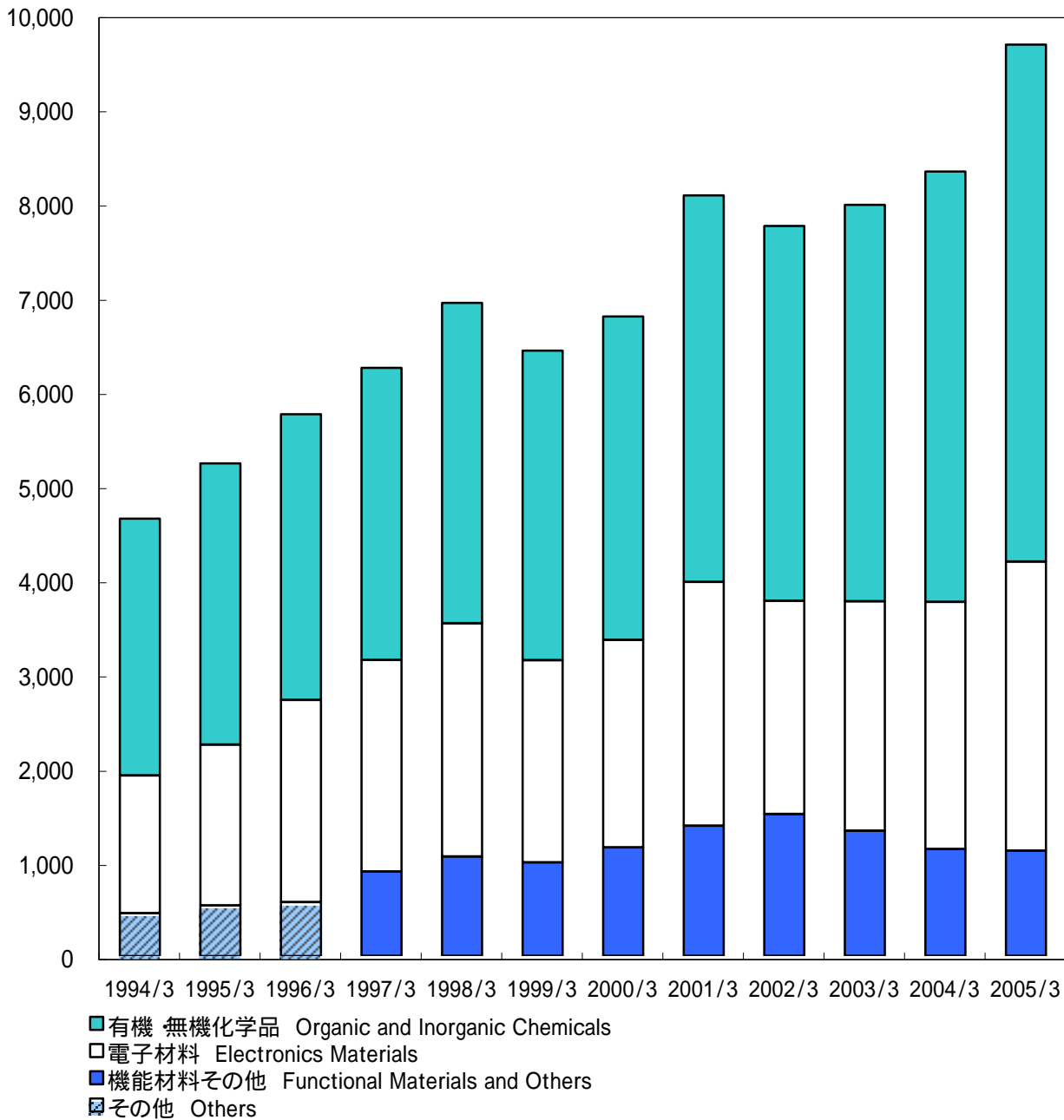


(円 / yen)

		1994/3	1995/3	1996/3	1997/3	1998/3	1999/3	2000/3	2001/3	2002/3	2003/3	2004/3	2005/3
一株当たり 当期純利益 Net Income per Share	連結 Consolidated	54.17	82.80	116.51	118.24	110.73	109.36	116.56	153.58	162.93	173.13	177.25	219.10
	単体 Non-consolidated	21.85	26.21	34.14	38.79	42.02	61.15	65.32	81.32	94.85	87.83	82.25	91.73

## 連結 セグメント別売上高 Net Sales by Segment (Consolidated)

億円 / 100 millions of yen



(百万円 / millions of yen)

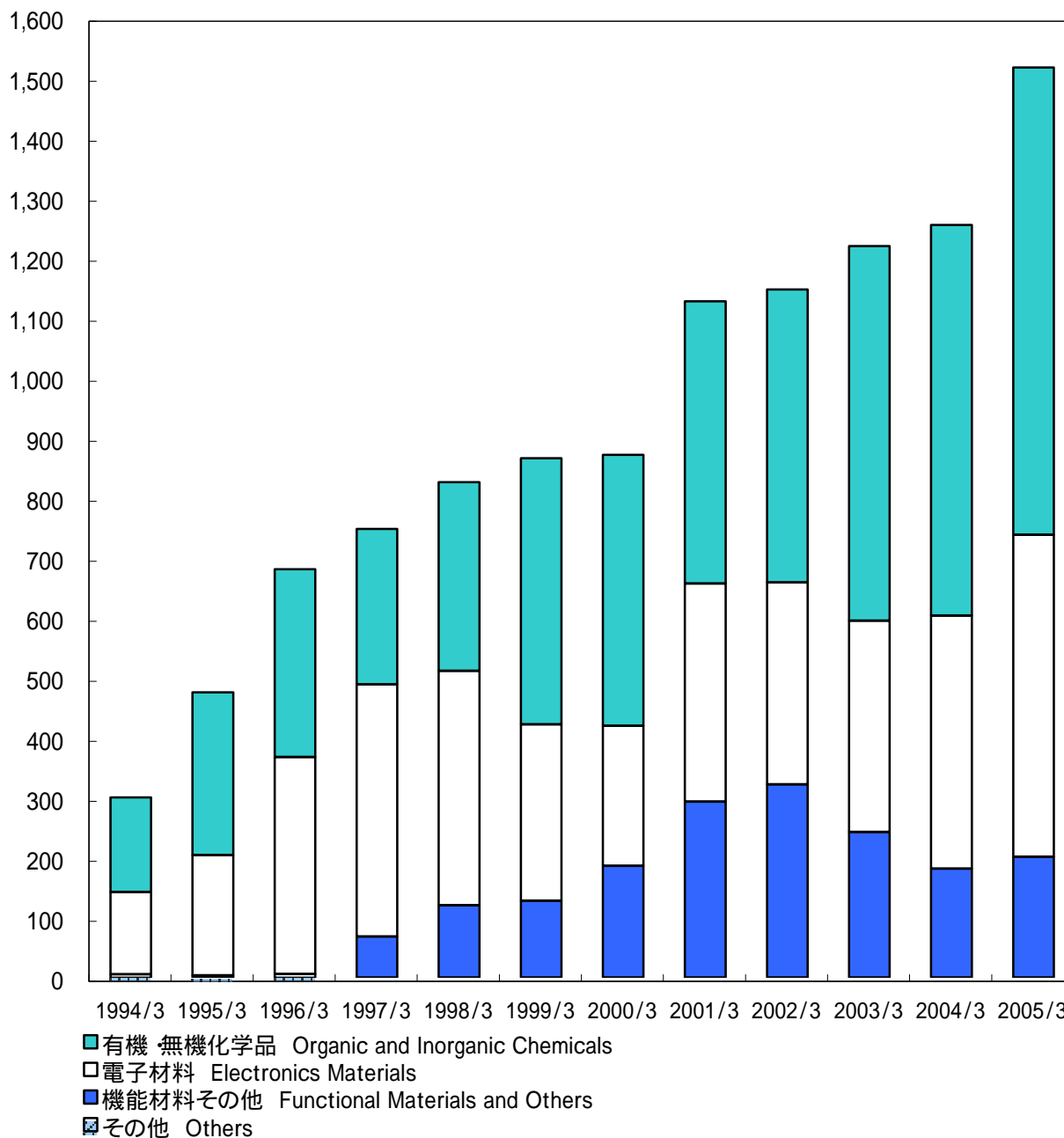
	1994/3	1995/3	1996/3	1997/3	1998/3	1999/3	2000/3	2001/3	2002/3	2003/3	2004/3	2005/3
有機・無機化学品 Organic and Inorganic Chemicals	272,862	298,467	303,284	310,030	340,050	328,925	343,412	410,370	397,983	421,021	457,009	548,950
電子材料 Electronics Materials	146,089	170,706	214,635	224,607	247,707	214,604	220,131	258,746	226,459	243,427	262,245	306,925
機能材料その他 Functional Materials and Others	-	-	-	89,767	105,515	99,265	115,314	138,367	150,652	133,074	113,550	111,610
その他 Others	45,496	53,743	57,255	-	-	-	-	-	-	-	-	-

注 :1997年3月期よりセグメントを変更しております。

Note: Segment Categories have been reclassified from the year ended March 31, 1997

## 連結 セグメント別営業利益 Operating Income by Segment (Consolidated)

億円 / 100 millions of yen



(百万円 / millions of yen)

	1994/3	1995/3	1996/3	1997/3	1998/3	1999/3	2000/3	2001/3	2002/3	2003/3	2004/3	2005/3
有機・無機化学品 Organic and Inorganic Chemicals	15,789	27,143	31,296	25,913	31,492	44,365	45,162	47,015	48,807	62,409	65,112	77,894
電子材料 Electronics Materials	13,710	20,055	36,146	42,014	39,044	29,398	23,344	36,360	33,678	35,248	42,182	53,684
機能材料その他 Functional Materials and Others	-	-	-	6,869	12,061	12,797	18,651	29,328	32,193	24,251	18,169	20,123
その他 Others	544	366	619	-	-	-	-	-	-	-	-	-

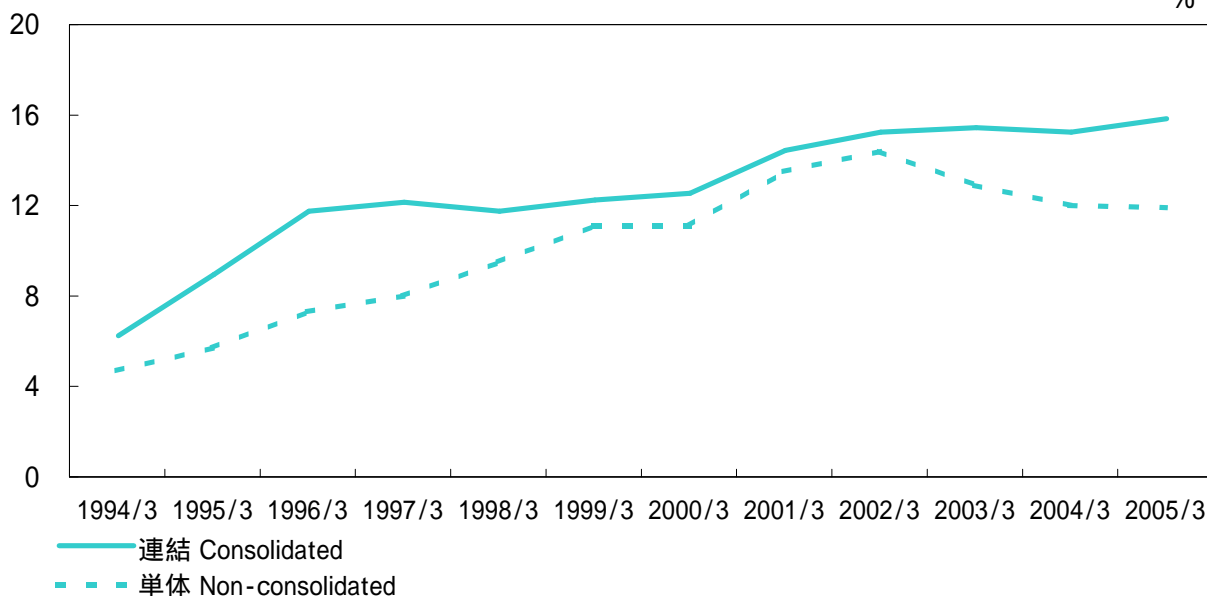
注 :1997年3月期よりセグメントを変更しております。

Note: Segment Categories have been reclassified from the year ended March 31, 1997



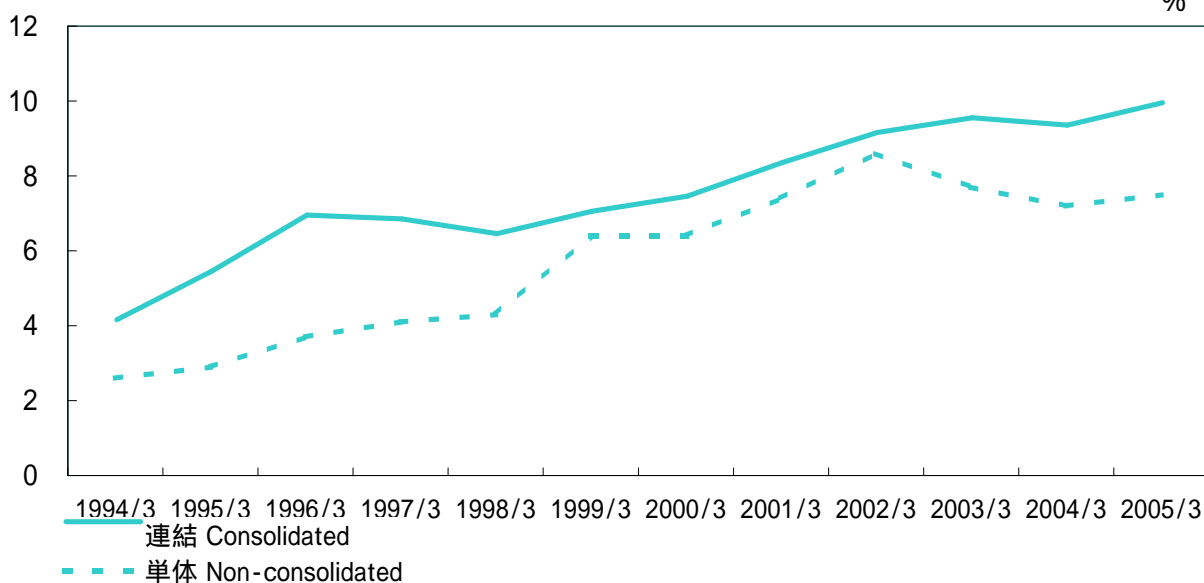
### 売上高経常利益率 Ordinary Income to Net Sales Ratio

(%)



### 売上高当期純利益率 Net Income to Net Sales Ratio

(%)

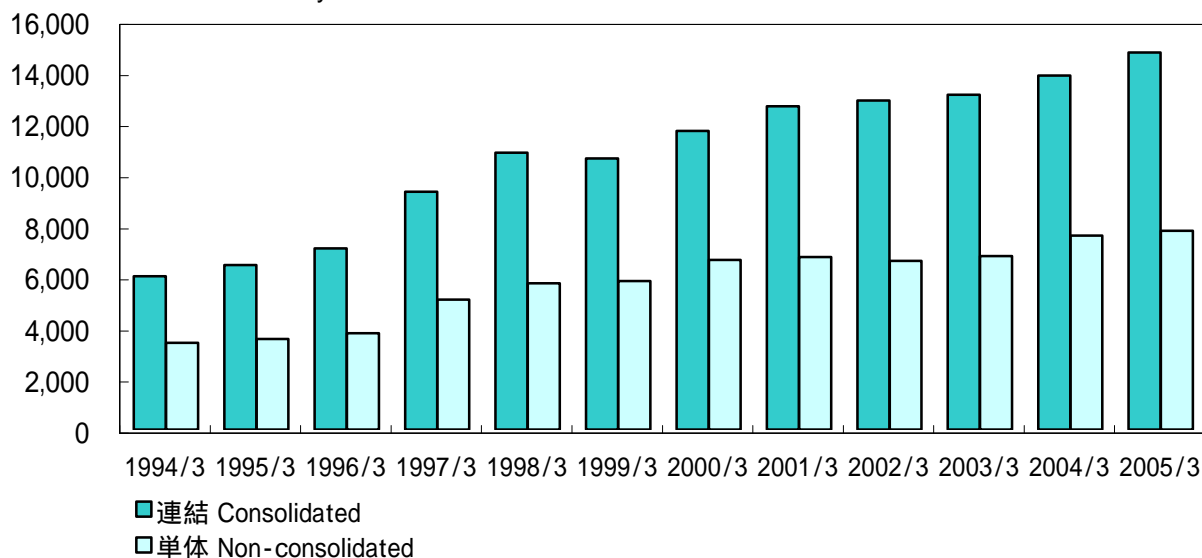


		(%)											
		1994/3	1995/3	1996/3	1997/3	1998/3	1999/3	2000/3	2001/3	2002/3	2003/3	2004/3	2005/3
売上高 経常利益率 Ordinary Income to Net Sales Ratio	連結 Consolidated	6.1	8.8	11.6	12.0	11.6	12.1	12.4	14.3	15.1	15.3	15.1	15.7
	単体 Non-consolidated	4.7	5.7	7.3	8.0	9.5	11.1	11.1	13.5	14.4	12.9	12.0	11.9
売上高 当期純利益率 Net Income to Net Sales Ratio	連結 Consolidated	3.8	5.1	6.6	6.5	6.1	6.7	7.1	8.0	8.8	9.2	9.0	9.6
	単体 Non-consolidated	2.6	2.9	3.7	4.1	4.3	6.4	6.4	7.4	8.6	7.7	7.2	7.5

## 総資産

### Total Assets

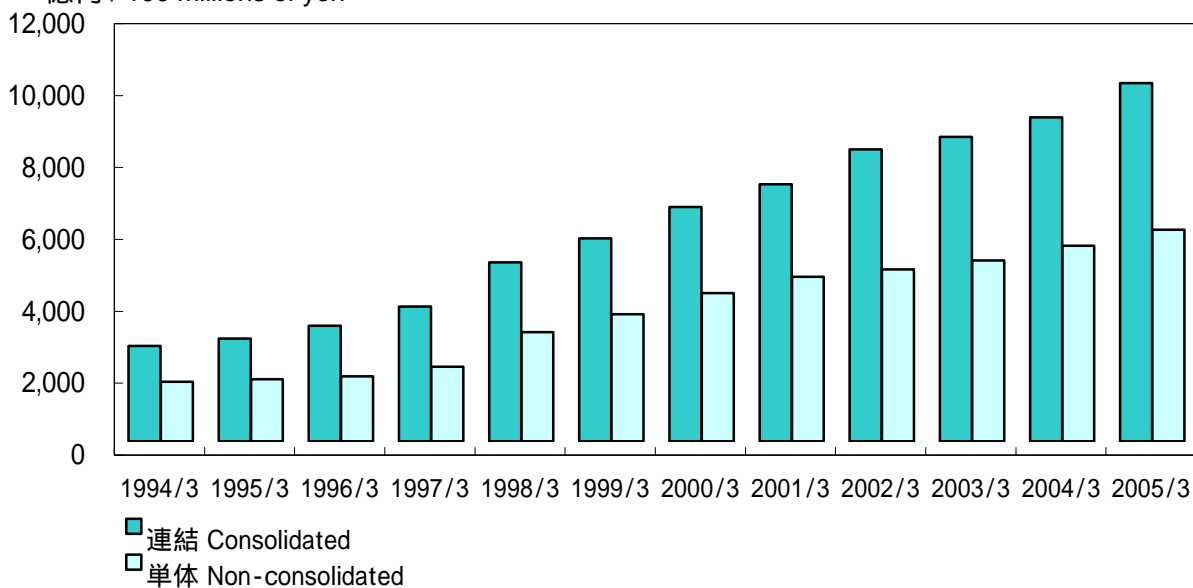
億円 / 100 millions of yen



## 株主資本

### Total Stockholders' Equity

億円 / 100 millions of yen

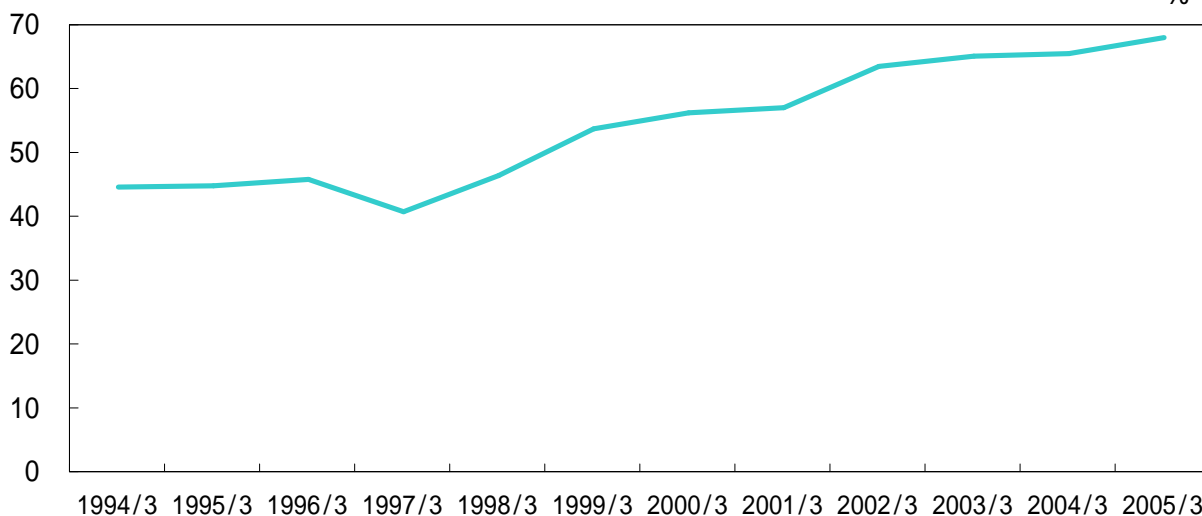


(百万円 / millions of yen)

		1994/3	1995/3	1996/3	1997/3	1998/3	1999/3	2000/3	2001/3	2002/3	2003/3	2004/3	2005/3
総資産 Total Assets	連結 Consolidated	600,754	643,936	708,636	931,158	1,083,780	1,060,973	1,168,729	1,265,799	1,288,432	1,310,874	1,386,216	1,476,248
	単体 Non-consolidated	339,687	355,100	377,679	508,737	573,105	581,632	663,813	675,403	659,852	679,380	758,820	777,928
株主資本 Total Stockholders' Equity	連結 Consolidated	265,029	285,361	320,987	374,725	497,311	564,066	651,261	714,996	812,068	846,961	900,724	996,307
	単体 Non-consolidated	165,408	172,490	181,119	207,491	303,911	353,305	412,216	457,786	478,180	502,912	544,266	588,048

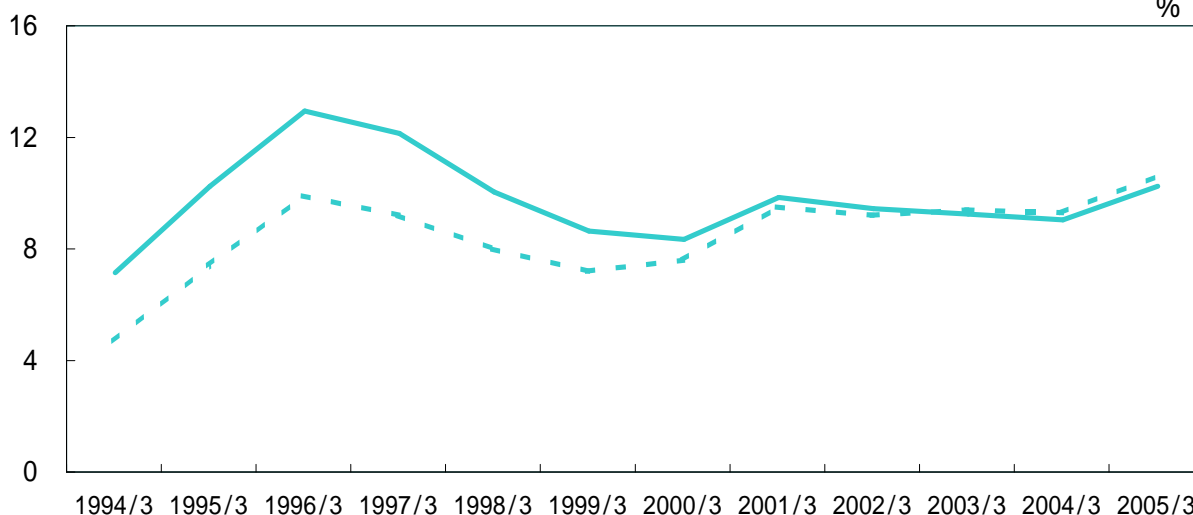
連結 株主資本比率  
Equity Ratio (Consolidated)

%



連結 株主資本当期純利益率、連結 総資本經常利益率  
Return on Equity, Return (Ordinary Income) on Total Assets (Consolidated)

%

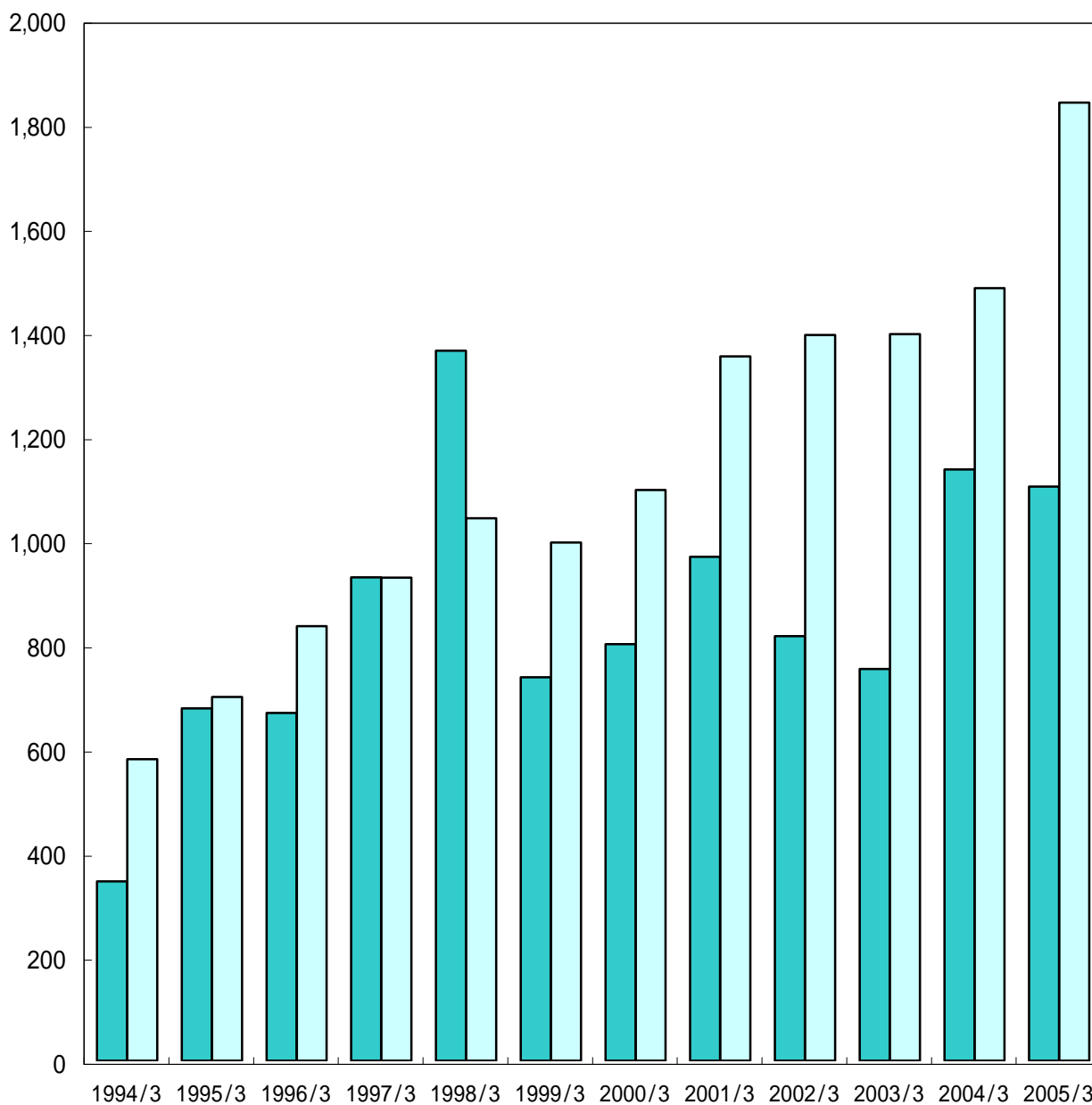


— 株主資本当期純利益率 Return on Equity  
- - - 総資本經常利益率 Return (Ordinary Income) on Total Assets

		(%)											
		1994/3	1995/3	1996/3	1997/3	1998/3	1999/3	2000/3	2001/3	2002/3	2003/3	2004/3	2005/3
株主資本比率 Equity Ratio	連結 Consolidated	44.1	44.3	45.3	40.2	45.9	53.2	55.7	56.5	63.0	64.6	65.0	67.5
株主資本 当期純利益率 Return on Equity	連結 Consolidated	6.7	9.8	12.5	11.7	9.6	8.2	7.9	9.4	9.0	8.8	8.6	9.8
総資本 經常利益率 Return (Ordinary Income) on Total Assets	連結 Consolidated	4.7	7.4	9.9	9.2	8.0	7.2	7.6	9.5	9.2	9.4	9.3	10.6

連結 設備投資額・キャッシュフロー  
Capital Expenditure and Cash Flow (Consolidated)

億円 / 100 millions of yen



■設備投資 Capital Expenditure  
□キャッシュフロー (当期純利益 + 償却額) Cash Flow (Net Income+Depreciation)

(百万円 / millions of yen)

	1994/3	1995/3	1996/3	1997/3	1998/3	1999/3	2000/3	2001/3	2002/3	2003/3	2004/3	2005/3
設備投資額 Capital Expenditure	34,421	67,689	66,790	92,844	136,383	73,641	80,003	96,770	81,543	75,220	113,591	110,277
減価償却費 Depreciation	40,351	42,986	45,646	52,190	62,143	56,196	61,384	70,767	70,878	66,566	73,581	90,874
キャッシュフロー (当期純利益 + 償却費) Cash Flow (Net Income+Depreciation)	57,897	69,848	83,471	92,804	104,170	99,558	109,613	135,272	139,396	139,581	148,387	184,035